

**Northern Saskatchewan
Health Indicators Report 2011**



**Northern Saskatchewan
Health Indicators Report 2011**
Summary

Athabasca Health Authority
Kernatin Yatthid Health Region
Nunawegan Churchill River Health Region



Injuries in northern Saskatchewan discussion

Dr. James Irvine
June 3, 2013

Report at:

www.populationhealthunit.ca



Northern SK defined as the three northern health authority area



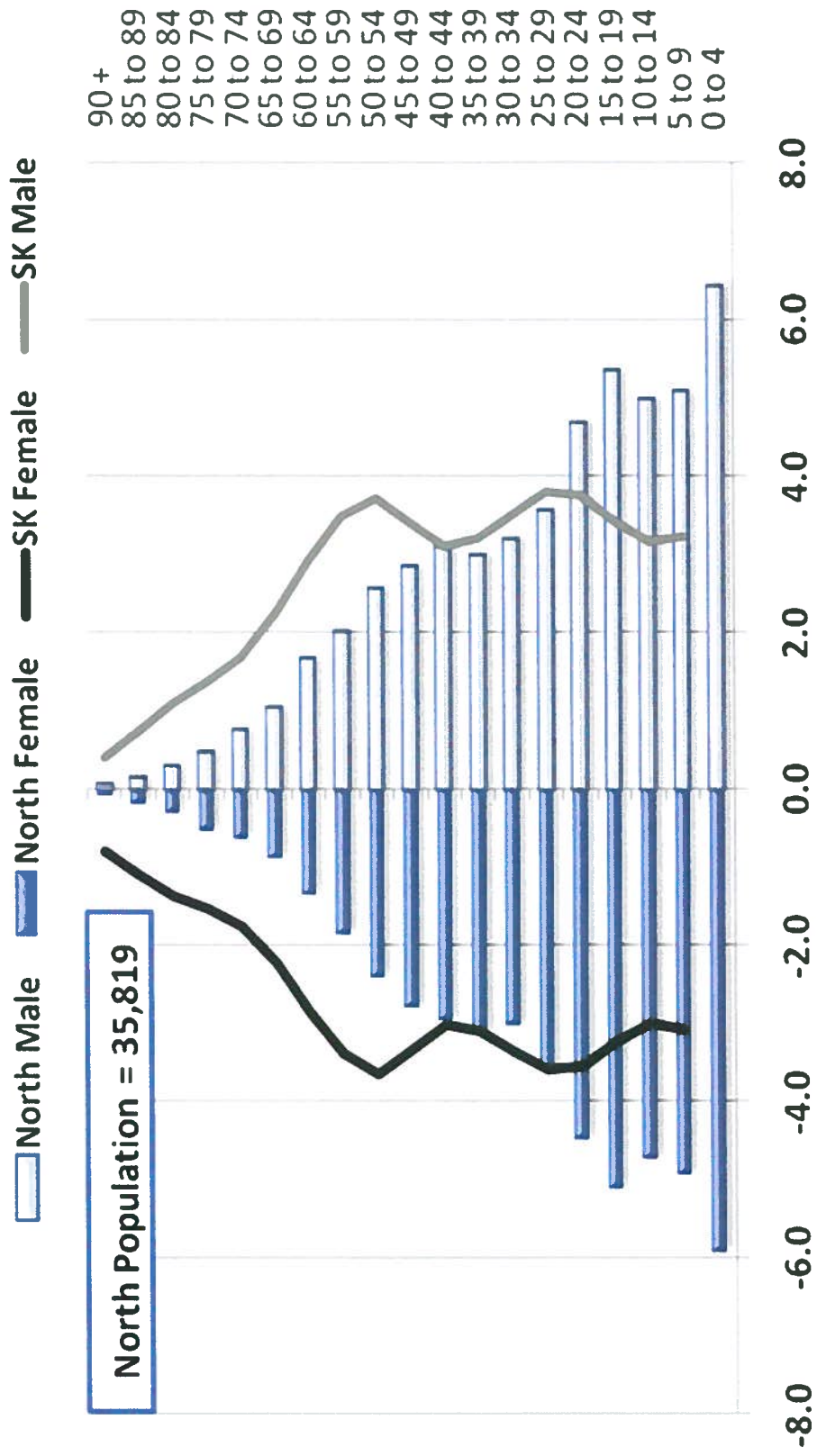


Ambulance

Injuries and violence in northern Saskatchewan

- Leading cause of death 23.4%
- By far, the leading cause of premature deaths especially in males
- 3rd leading cause of hospitalization for people in the north

Population By Age Group Saskatchewan and Northern Saskatchewan 2010



Over 31% under age 15 years compared to about 18% for Saskatchewan

Leading causes of death,

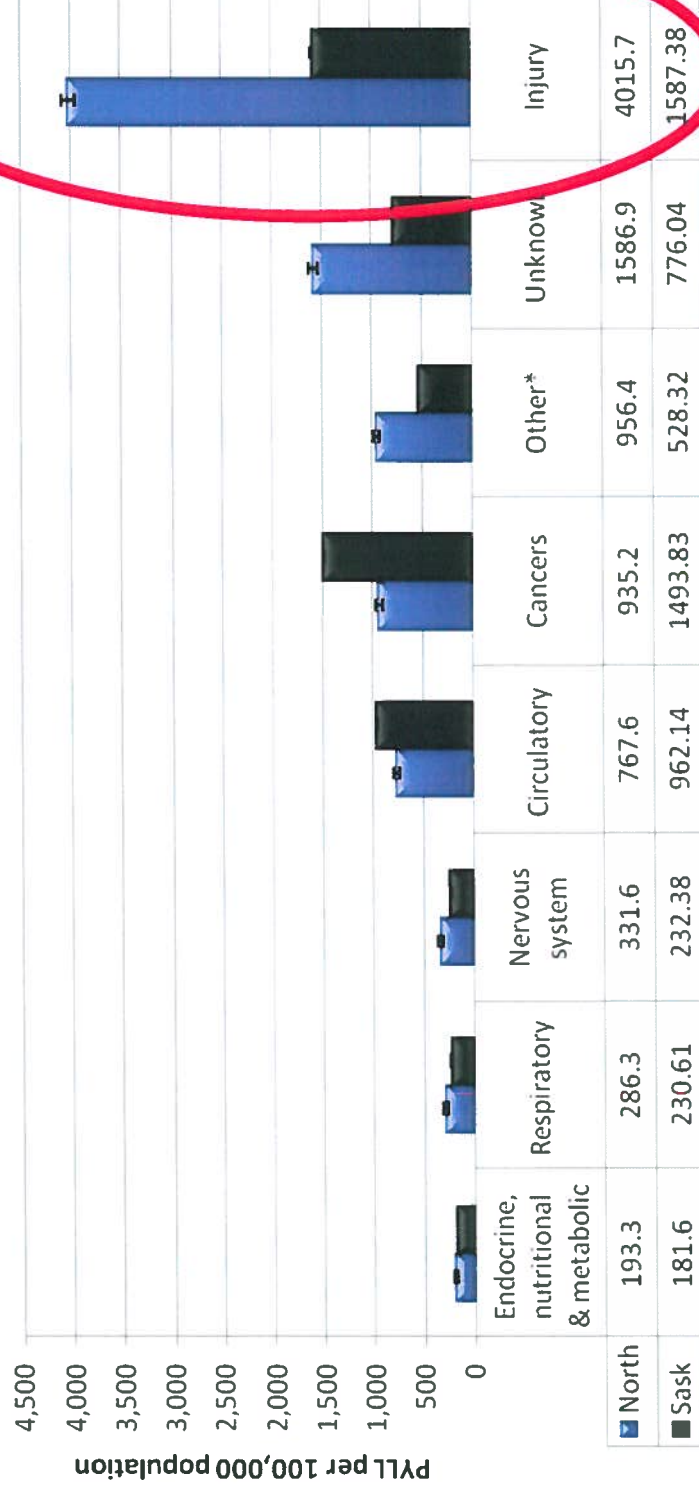
1998-2007

North

Saskatchewan

- | | | | |
|---------------|-------|---------------|-------|
| • Injury | 23.4% | • Circulatory | 35.4% |
| • Cancer | 22% | • Cancer | 25.7% |
| • Circulatory | 21.2% | • Respiratory | 9% |
| • Respiratory | 7.7% | • Injury | 6.4% |

Premature deaths (PYLL) by causes, 10 year average, Saskatchewan and NorthSask, 1998-2007

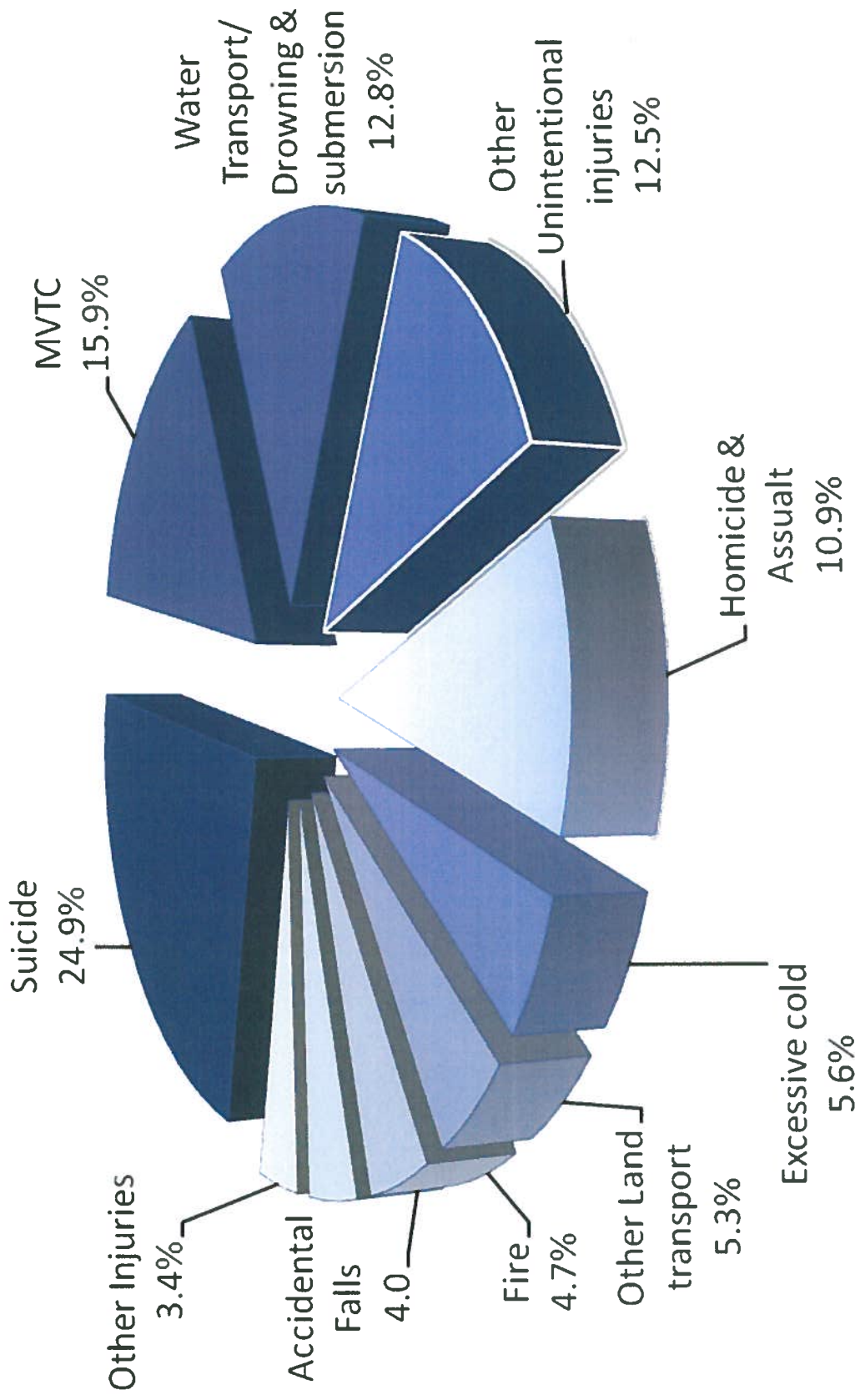


The rate of premature deaths from injuries has decreased slightly over the past decade. However, the northern premature deaths from injuries:

- make up 44% of the overall premature death rate
- are 2 ½ times the provincial rate
- are times 2.8 times higher for males than for females

Proportion of total injury mortality

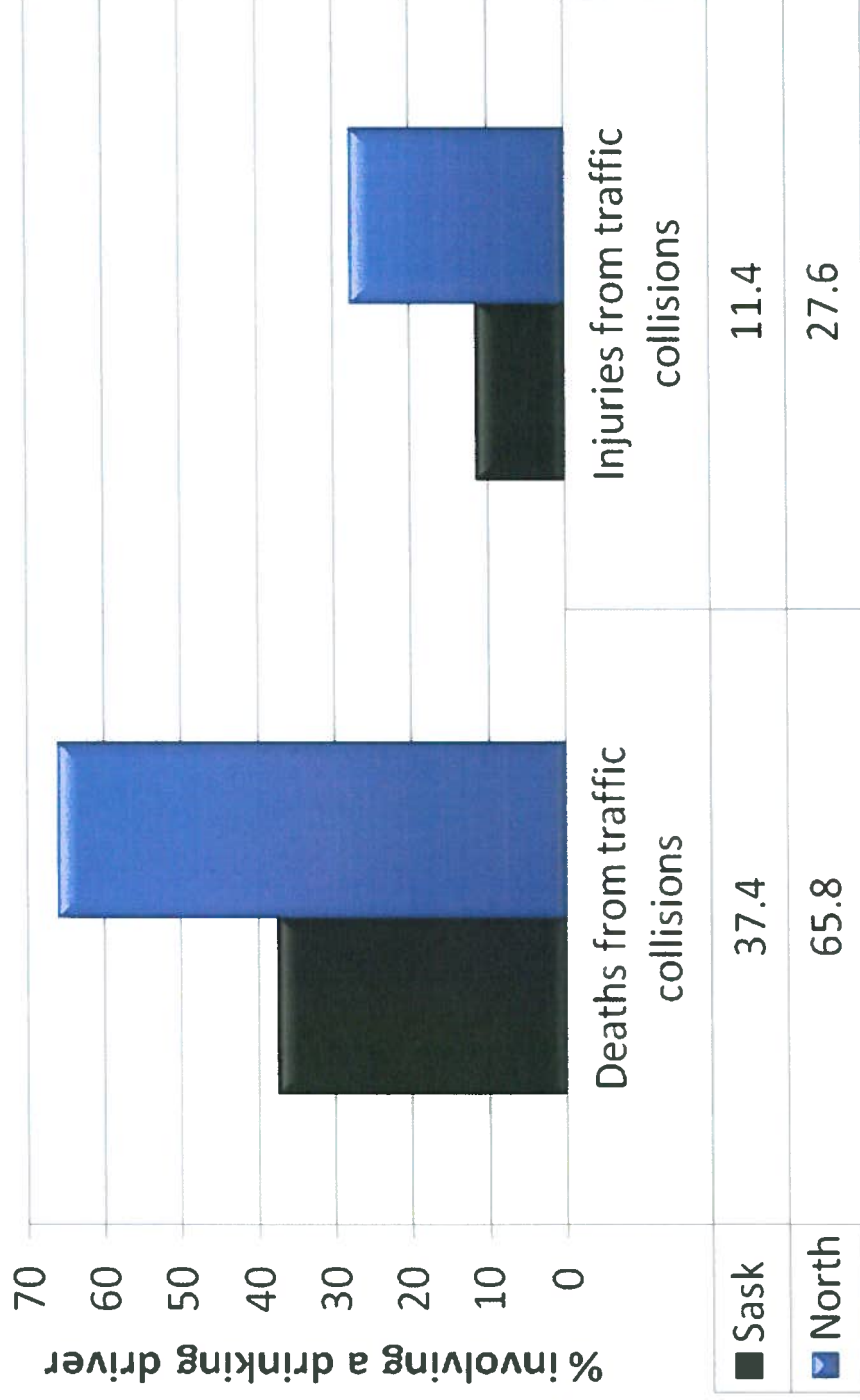
by specific cause, NorthSask 1998-2007



Source: SaskHealth 2009, Prepared by PHU Sept 2010

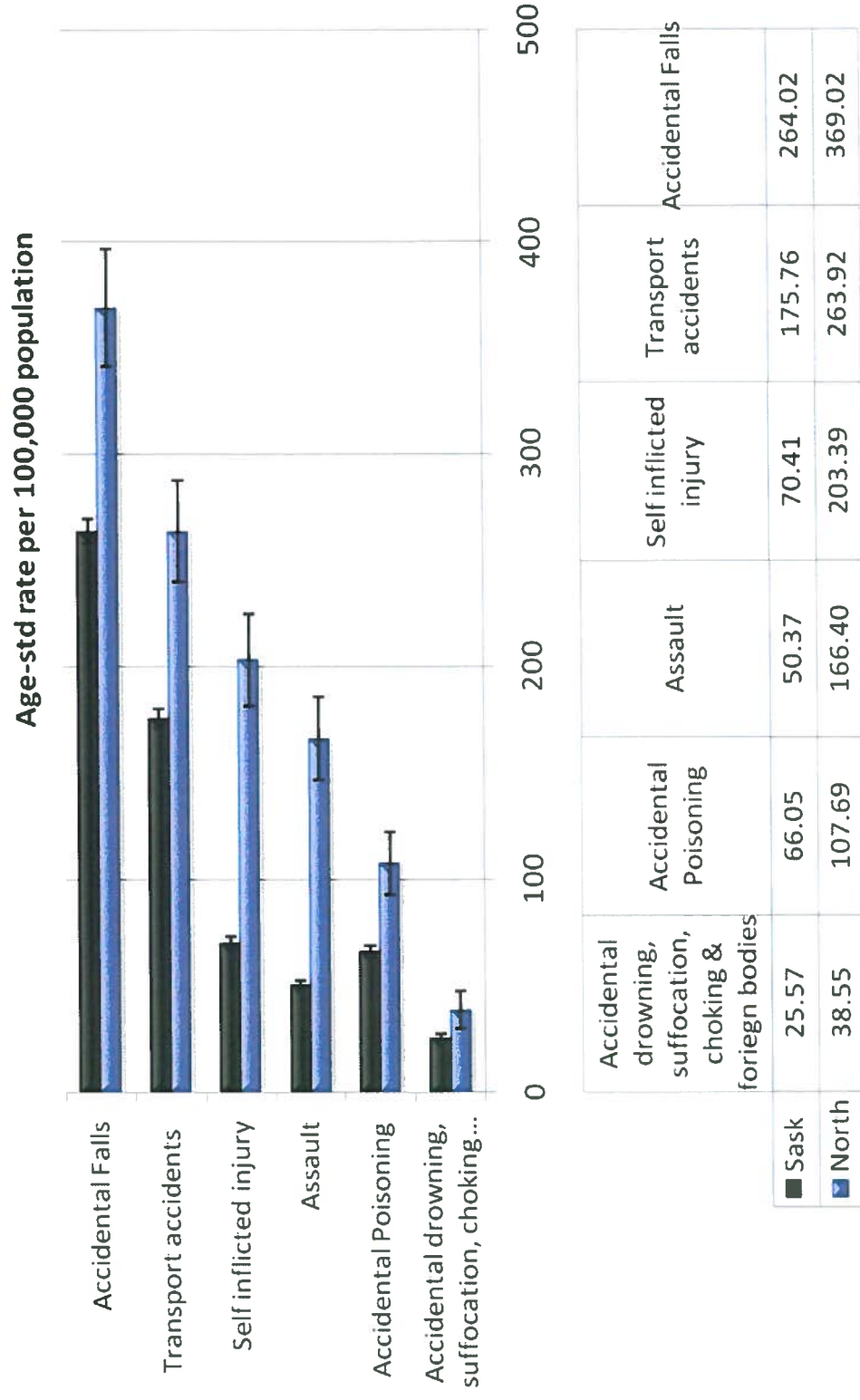
Injuries and Deaths in Traffic Collisions due to a Drinking Driver

NorthSask and Saskatchewan, 2004-8



SGI Traffic Accident Information System, 2010, Prepared by PHU Apr 2010

Age-std Injury Hospitalization, Population Aged 0-19 years, NorthSask and Saskatchewan 1995-6 to 2006-7



Source: SaskHealth 2009, Prepared by PHU March 2010

- Some of the determinants
 - Psychosocial factors
 - Early childhood development
 - Adverse childhood events
 - Alcohol / Addictions
 - Poverty
 - 6 – Es of injury prevention: Education, Enforcement, Engineering, Economics (or employment), Equity

Related issues:

