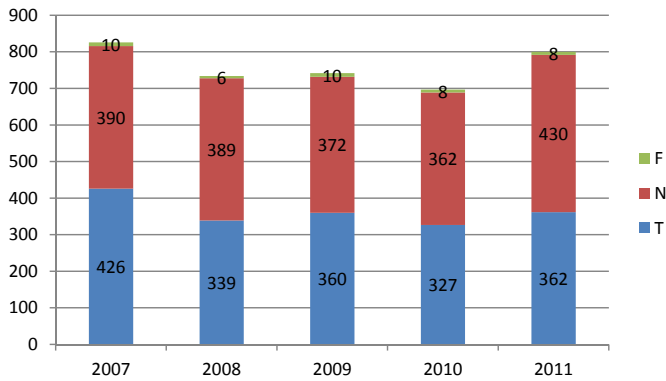


Transportation Accident Statistics

This analysis uses data from the Annual Report/Stats Supplement. Claim type, cause, rate code and occupation coding are based on what the claim was coded as at the time of the Annual Report. Fatality counts only include claims registered in the given year.

The overall number of transportation claims has been quite steady, with slightly higher numbers in 2007 and 2011.

Number of Transportation Accidents



Overall, 2.2% of all claims from 2007 to 2011 were transportation accidents. It was slightly higher than average in 2011, at 2.4%

Year	TL	NTL	Fatal	All
2007	3.2%	1.8%	47.6%	2.3%
2008	2.5%	1.7%	27.3%	2.0%
2009	2.9%	1.8%	34.5%	2.2%
2010	2.8%	1.7%	26.7%	2.1%
2011	3.1%	2.0%	36.4%	2.4%
Overall	2.9%	1.8%	33.9%	2.2%

The percentage of claims that are transportation accidents increases slightly with age. This is likely because there are more older workers in industries/occupations that involve travel.

Age Group	% Transport	# of Claims
Under 25	1.8%	649
25-34	2.2%	897
35-44	2.3%	818
45 to 54	2.3%	912
55 to 64	2.4%	450
65 and Over	2.9%	73
Overall	2.2%	3799

2.5% of all male claims are transportation accidents, compared to 1.7% of female claims.

Year	Male		Female	
	%	#	%	#
2007	2.7%	616	1.7%	197
2008	2.2%	533	1.6%	201
2009	2.5%	556	1.6%	186
2010	2.4%	521	1.5%	175
2011	2.7%	599	1.8%	201
Overall	2.5%	2825	1.7%	960

Transportation Accident Statistics

The rate codes with the highest proportion of transportation accidents are D71, S41 and D32. However, the number of claims in these industries overall is very small overall. Based on number of claims and percentage of total, the rate codes most likely to have transportation accidents are T42 and G31. R11, S12 and D41 are also over 5%, compared to the overall average of 2.2%

Rate Code	Description	Percentage of All Claims That Are Transportation Accidents						# of Transport Claims
		2007	2008	2009	2010	2011	Total	
D71	Open Pit Mining	10.9%	6.1%	6.1%	7.0%	15.1%	9.1%	42
S41	Engineering, Testing and Surveying	11.6%	5.4%	12.2%	8.5%	8.2%	9.1%	74
D32	Operation of Oilwells	7.1%	5.9%	7.7%	10.8%	12.6%	8.8%	56
T42	Transportation, Courier, Commercial Bus	7.9%	6.6%	6.3%	5.9%	6.0%	6.6%	506
T51	Operation of Railways	6.7%	4.1%	8.7%	7.1%	4.3%	6.2%	42
G31	Cities, Towns, Villages, RM's	6.9%	5.9%	7.3%	4.9%	5.6%	6.1%	456
R11	Road Construction and Earthwork	6.7%	4.9%	3.2%	6.1%	7.2%	5.7%	222
S12	Offices, Professionals	4.5%	4.9%	5.0%	4.8%	6.6%	5.2%	128
D41	Oilwell Servicing	4.0%	3.7%	5.3%	7.6%	4.9%	5.1%	176
U11	Telecommunications	3.3%	4.7%	4.5%	4.2%	4.5%	4.2%	26
D51	Service Rigs and Water Well Drilling	3.2%	7.5%	2.5%	3.4%	3.7%	4.2%	52
A21	Farming and Ranching	3.3%	3.8%	5.9%	2.3%	2.5%	3.6%	15
D72	Underground Softrock Mining	3.7%	3.5%	3.5%	3.1%	3.6%	3.5%	60
G51	Government of Saskatchewan and Ministries	3.9%	3.3%	3.5%	1.9%	4.0%	3.3%	203
S21	Community and Social Services	3.5%	4.0%	3.3%	2.9%	2.8%	3.3%	120
T61	Commercial Air Transportation	4.5%	4.5%	1.3%	3.0%	2.0%	3.2%	16
G12	Elementary and Secondary Education	4.4%	1.6%	3.9%	2.8%	2.3%	3.0%	81
U31	Electric Systems	3.4%	3.1%	1.4%	2.4%	3.2%	2.8%	21
S11	Legal Offices, Financial, Drafting	3.0%	1.2%	0.0%	3.6%	5.3%	2.6%	9
S33	Caretaking, Park Authorities	2.5%	1.1%	2.5%	3.3%	3.1%	2.6%	28
C61	Automotive, Implement Sales and Service	2.0%	2.2%	2.2%	1.7%	2.3%	2.1%	119
D73	Underground Hardrock Mining	4.0%	0.9%	3.0%	1.0%	1.7%	2.1%	31
C12	Light Commodity Marketing	1.8%	0.8%	2.1%	3.0%	1.5%	1.8%	50
M31	Manufacturing, Pipeline Operations	2.2%	2.0%	2.2%	0.0%	2.0%	1.8%	8
C33	Wholesale, Chain Stores	1.7%	1.3%	1.6%	2.1%	2.2%	1.7%	87
A31	Grain Elevators and Inland Terminals	2.8%	3.0%	0.7%	0.0%	1.6%	1.6%	10
M81	Metal Foundries & Mills	0.6%	1.9%	1.1%	2.2%	2.1%	1.6%	15
G11	Post Secondary Education	2.0%	0.9%	0.8%	2.2%	1.7%	1.5%	28
C51	Lumber Yard, Builders Supplies	1.0%	0.9%	1.6%	1.9%	1.9%	1.5%	38
C41	Co-operative Associations	0.9%	1.7%	1.4%	1.3%	2.0%	1.5%	47
C62	Automotive Service Shops, Towing	1.3%	1.9%	1.1%	1.5%	1.3%	1.4%	56
C32	Grocery, Department Store, Hardware	1.3%	1.1%	1.2%	1.7%	1.5%	1.4%	112
D52	Seismic Drilling	2.7%	0.2%	0.7%	1.5%	1.4%	1.3%	20
M41	Dairy Products, Soft Drinks	0.0%	1.7%	1.9%	1.6%	0.7%	1.3%	11
M33	Refineries and Upgrader	0.0%	2.0%	1.0%	2.5%	0.0%	1.2%	6
S32	Personal, Business and Leisure Services	1.0%	1.1%	1.5%	1.1%	0.8%	1.1%	42
A11	Light Agricultural Operations	1.4%	1.1%	0.9%	1.0%	1.2%	1.1%	18
G22	Health Authority, Hospitals, Care Homes	1.1%	1.2%	1.0%	1.1%	1.3%	1.1%	288
B11	Construction Trades	1.7%	1.2%	0.8%	1.1%	0.8%	1.1%	61
M62	Mills, Semi Medium Manufacturing	0.9%	0.7%	0.6%	1.6%	1.5%	1.0%	43
B12	Residential Construction	1.0%	1.0%	0.9%	0.8%	1.0%	1.0%	59
S23	Hotels, Motels, Taxis	0.6%	0.9%	1.3%	0.6%	1.1%	0.9%	29
M42	Bakeries, Food Prep and Packaging	0.9%	0.9%	0.6%	0.6%	1.7%	0.9%	6
B13	Commercial, Industrial Construction	0.9%	0.6%	0.7%	0.8%	1.0%	0.8%	59
M92	Machine Shops, Manufacturing	0.6%	0.5%	1.0%	0.5%	1.0%	0.7%	47
M72	Processing Meat, Poultry and Fish	0.9%	0.3%	1.3%	0.6%	0.2%	0.7%	19
M91	Agricultural Equipment	0.5%	0.2%	0.6%	0.3%	0.8%	0.5%	22
S22	Restaurants, Catering, Dry Cleaning	0.7%	0.2%	0.5%	0.2%	0.5%	0.4%	27
M94	Iron and Steel Fabrication	0.3%	0.3%	0.0%	0.3%	0.5%	0.3%	7
S14	Unions	0.0%	0.0%	0.0%			0.0%	0
Overall		2.3%	2.0%	2.2%	2.1%	2.4%	2.2%	

Transportation Accident Statistics

Again, T42 and G31 have had the most transportation accidents in the last 5 years. G22 is third, however that is more related to the size of the rate code. The previous table showed that the percentage that transportation injuries make up is small (1.1%) in that industry.

Rate Code	Description	Time Loss					No Time Loss					Fatality	Total
		2007	2008	2009	2010	2011	2007	2008	2009	2010	2011		
T42	Transportation, Courier, Commercial Bus	81	72	65	52	65	43	35	24	30	34	5	506
G31	Cities, Towns, Villages, RM's	56	41	58	41	40	52	51	52	28	37	0	456
G22	Health Authority, Hospitals, Care Homes	31	28	26	34	34	25	37	23	20	30	0	288
R11	Road Construction and Earthwork	30	18	13	15	28	18	19	10	29	36	6	222
G51	Government of Saskatchewan and Ministries	25	14	16	12	21	23	27	27	11	25	2	203
D41	Oilwell Servicing	16	9	6	22	20	9	16	24	30	20	4	176
S12	Offices, Professionals	13	10	9	7	8	11	16	14	15	25	0	128
S21	Community and Social Services	9	13	9	10	7	16	14	15	12	15	0	120
C61	Automotive, Implement Sales and Service	11	17	18	5	12	9	9	7	13	16	2	119
C32	Grocery, Department Store, Hardware	11	2	8	11	8	12	16	12	16	14	2	112
C33	Wholesale, Chain Stores	10	6	7	10	11	10	9	10	8	5	1	87
G12	Elementary and Secondary Education	8	5	10	7	9	15	4	11	7	4	1	81
S41	Engineering, Testing and Surveying	4	2	3	5	3	13	7	14	8	12	3	74
B11	Construction Trades	10	6	2	9	5	5	7	7	4	5	1	61
D72	Underground Softrock Mining	3	4	2	1	2	8	8	10	11	9	2	60
B13	Commercial, Industrial Construction	8	3	2	7	8	3	5	7	5	11	0	59
B12	Residential Construction	10	8	5	5	7	3	6	5	5	5	0	59
D32	Operation of Oilwells	3	2	3	4	6	8	4	7	9	10	0	56
C62	Automotive Service Shops, Towing	6	8	4	4	6	6	8	3	7	3	1	56
D51	Service Rigs and Water Well Drilling	0	7	1	5	2	7	13	4	3	9	1	52
C12	Light Commodity Marketing	6	2	7	6	5	4	2	5	9	3	1	50
C41	Co-operative Associations	3	6	5	4	5	2	5	4	5	7	1	47
M92	Machine Shops, Manufacturing	7	3	7	3	3	2	4	5	3	7	3	47
M62	Mills, Semi Medium Manufacturing	4	2	3	3	6	5	5	2	8	5	0	43
T51	Operation of Railways	6	4	9	2	2	4	2	3	7	3	0	42
S32	Personal, Business and Leisure Services	4	4	4	4	3	3	4	9	5	2	0	42
D71	Open Pit Mining	0	0	0	1	0	11	5	6	5	14	0	42
C51	Lumber Yard, Builders Supplies	3	4	3	7	5	2	1	5	3	5	0	38
D73	Underground Hardrock Mining	1	3	4	0	1	10	0	4	3	4	1	31
S23	Hotels, Motels, Taxis	3	3	4	2	2	1	3	5	2	3	1	29
G11	Post Secondary Education	3	2	1	5	0	4	1	2	4	6	0	28
S33	Caretaking, Park Authorities	4	1	4	1	4	2	1	1	6	4	0	28
S22	Restaurants, Catering, Dry Cleaning	2	2	4	0	1	8	1	2	2	5	0	27
U11	Telecommunications	1	2	4	4	3	3	4	1	1	3	0	26
M91	Agricultural Equipment	0	0	2	1	5	4	3	4	1	1	1	22
U31	Electric Systems	5	4	1	1	1	1	1	1	1	4	1	21
D52	Seismic Drilling	4	0	0	2	2	5	1	1	2	3	0	20
M72	Processing Meat, Poultry and Fish	4	3	3	2	1	3	0	3	0	0	0	19
A11	Light Agricultural Operations	2	1	2	3	0	3	3	1	0	3	0	18
T61	Commercial Air Transportation	1	2	0	3	1	2	3	1	0	1	2	16
A21	Farming and Ranching	2	0	4	0	1	1	3	1	2	1	0	15
M81	Metal Foundries & Mills	1	2	2	3	2	0	2	0	1	2	0	15
M41	Dairy Products, Soft Drinks	0	2	3	1	0	0	1	1	2	1	0	11
A31	Grain Elevators and Inland Terminals	0	0	0	0	0	3	4	1	0	2	0	10
S11	Legal Offices, Financial, Drafting	2	1	0	0	1	0	0	0	2	3	0	9
M31	Manufacturing, Pipeline Operations	2	1	1	0	0	0	1	1	0	2	0	8
M94	Iron and Steel Fabrication	1	1	0	0	1	1	1	0	1	1	0	7
M42	Bakeries, Food Prep and Packaging	1	0	1	0	0	0	1	0	1	2	0	6
M33	Refineries and Upgrader	0	0	0	0	0	0	2	1	3	0	0	6

Transportation Accident Statistics

72% of all transportation accidents from 2007 to 2011 were on the highway. The most common cause is a non-collision jack-knife or overturn on the highway.

Detailed Cause	TL	NTL	F	Total	% of Total
Highway accident	1347	1377	31	2755	72.5%
Jack-knifed or overturned--no collision	324	281	12	617	16.2%
Moving in same direction	213	262	0	475	12.5%
Moving in intersection	176	153	3	332	8.7%
Noncollision accident, n.e.c.	138	161	0	299	7.9%
Moving and standing vehicle, mobile equip.--in roadway	69	96	0	165	4.3%
Collision between vehicles, mobile equipment, uns	71	84	2	157	4.1%
Collision between vehicles, mobile equipment, n.e.c.	71	59	2	132	3.5%
Sudden start or stop, n.e.c.	55	63	0	118	3.1%
Moving in opposite directions, oncoming	70	38	6	114	3.0%
Ran off highway--no collision	43	44	0	87	2.3%
Highway accident, n.e.c.	35	34	2	71	1.9%
Highway accident,uns	34	30	3	67	1.8%
Vehicle struck stationary obj.,equip. on side of road	18	22	0	40	1.1%
Vehicle struck stationary obj./equip. in roadway	10	18	1	29	0.8%
Moving/standing vehicle/mobile equipment--side of road	7	12	0	19	0.5%
Noncollision accident, uns	6	12	0	18	0.5%
Re-entrant collision	7	7	0	14	0.4%
Struck by shifting load	0	1	0	1	0.0%
Nonhighway accident, except rail, air, water	185	203	1	389	10.2%
Noncollision accident, n.e.c.-nonhighway accident	35	42	0	77	2.0%
Vehicle, mobile equip. struck stationary object	31	32	0	63	1.7%
Overturned-nonhighway accident	31	25	1	57	1.5%
Collision between vehicles or mobile equip.	26	31	0	57	1.5%
Sudden start of stop, n.e.c.-nonhighway accident	19	29	0	48	1.3%
Fall from moving vehicle, mobile equipment-nonhighway	20	22	0	42	1.1%
Nonhighway accident, n.e.c.	7	5	0	12	0.3%
Nonhighway accident, uns	4	6	0	10	0.3%
Noncollision nonhighway accident, uns	6	2	0	8	0.2%
Loss of controll-nonhighway accident	3	4	0	7	0.2%
Fell from and struck by vehicle, mobile equipment	2	4	0	6	0.2%
Struck by shifting load-nonhighway accident	1	1	0	2	0.1%
Pedestrian, nonpassenger struck by vehicle, mobile equipment	174	129	4	307	8.1%
Railway accident	12	16	0	28	0.7%
Aircraft accident	10	9	3	22	0.6%
Water vehicle accident	3	3	0	6	0.2%
Transportation accident, uns. or n.e.c.	83	206	3	292	7.7%
Grand Total	1814	1943	42	3799	100.0%

Transportation Accident Statistics

The number of highway accidents jumped by 127 from 2010 to 2011.

Detailed Cause	2007	2008	2009	2010	2011
Highway accident	579	527	532	495	622
Jack-knifed or overturned--no collision	123	137	99	105	153
Moving in same direction	92	82	113	71	117
Moving in intersection	76	47	73	73	63
Noncollision accident, n.e.c.	61	68	48	44	78
Moving and standing vehicle, mobile equip.--in roadway	37	35	28	33	32
Collision between vehicles, mobile equipment, uns	36	29	34	27	31
Collision between vehicles, mobile equipment, n.e.c.	39	25	26	21	21
Sudden start or stop, n.e.c.	24	17	32	22	23
Moving in opposite directions, oncoming	18	20	20	31	25
Ran off highway--no collision	15	19	13	18	22
Highway accident, n.e.c.	15	15	12	18	11
Highway accident,uns	9	10	14	16	18
Vehicle struck stationary obj.,equip. on side of road	12	8	6	4	10
Vehicle struck stationary obj./equip. in roadway	8	4	3	5	9
Moving/standing vehicle/mobile equipment--side of road	6	2	4	4	3
Noncollision accident, uns	7	6	3	0	2
Re-entrant collision	1	3	4	3	3
Struck by shifting load	0	0	0	0	1
Nonhighway accident, except rail, air, water	92	88	80	63	66
Noncollision accident, n.e.c.-nonhighway accident	15	10	18	18	16
Vehicle, mobile equip. struck stationary object	15	15	13	9	11
Overturned-nonhighway accident	15	11	9	12	10
Collision between vehicles or mobile equip.	15	16	17	5	4
Sudden start of stop, n.e.c.-nonhighway accident	11	12	10	4	11
Fall from moving vehicle, mobile equipment-nonhighway	10	12	6	7	7
Nonhighway accident, n.e.c.	1	4	2	2	3
Nonhighway accident, uns	1	3	2	2	2
Noncollision nonhighway accident, uns	2	2	1	2	1
Loss of controll-nonhighway accident	4	1	0	1	1
Fell from and struck by vehicle, mobile equipment	3	2	0	1	0
Struck by shifting load-nonhighway accident	0	0	2	0	0
Pedestrian, nonpassenger struck by vehicle, mobile equipment	72	58	59	65	53
Railway accident	10	4	7	5	2
Aircraft accident	10	4	2	1	5
Water vehicle accident	4	1	0	1	0
Transportation accident, uns. or n.e.c.	59	52	62	67	52
Grand Total	826	734	742	697	800

Transportation Accident Statistics

The following table includes all occupation groups with at least 25 transportation accidents in the last 5 years.

Occupation	% Transport Claims	# of Transport Claims
Sales Representatives, Wholesale Trade	17.3%	29
Motor Vehicle and Transit Drivers	10.6%	977
Heavy Equipment Operators	9.6%	221
Psychologists, Social Workers, Counsellors, Clergy and Probation Officers	8.1%	43
Policy and Program Officers, Researchers and Consultants	7.5%	30
Police Officers and Firefighters	6.1%	112
Underground Miners, Oil and Gas Drillers and Related Workers	4.4%	41
Paralegals, Social Services Workers and Occupations in Education and Religion, n.e.c.	4.3%	83
Public Works and Other Labourers, n.e.c.	4.1%	51
Mine Service Workers and Operators in Oil and Gas Drilling	3.7%	43
Contractors and Supervisors, Trades and Related Workers	3.7%	42
Primary Production Labourers	3.5%	119
Childcare and Home Support Workers	3.0%	48
Security Guards and Related Occupations	2.8%	27
Longshore Workers and Material Handlers	2.5%	109
Other Installers, Repairers and Servicers	2.3%	37
Managers in Retail Trade	2.1%	27
Recording, Scheduling & Distributing	2.0%	41
Electrical Trades and Telecommunication Occupations	2.0%	62
Mail & Message Distribution Occupations	1.9%	30
Other Occupations in Protective Service	1.9%	25
Other Technical Occupations in Health Care (Except Dental)	1.8%	47
Trades Helpers and Labourers	1.2%	67
Plumbers, Pipefitters and Gas Fitters	1.1%	25
Nurse Supervisors and Registered Nurses	1.1%	49
Automotive Service Technicians	1.0%	38
Other Sales and Related Occupations	1.0%	29
Assisting Occupations in Support of Health Services	1.0%	98
Machinery and Transportation Equipment Mechanics (Except Motor Vehicle)	1.0%	41
Labourers in Processing, Manufacturing and Utilities	1.0%	86
Retail Salespersons & Sales Clerks	0.8%	44
Cleaners	0.8%	62
Metal Forming, Shaping and Erecting Trades	0.3%	28