



Traffic Safety

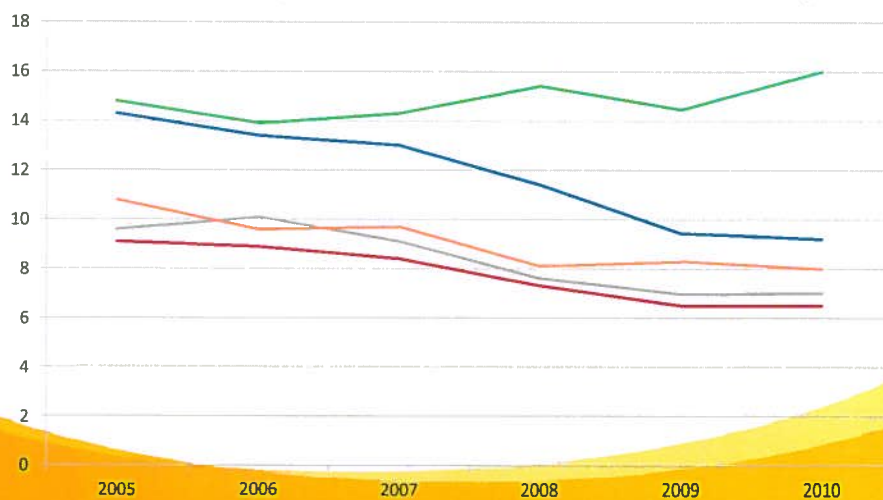
Saskatchewan Government Insurance

May 21, 2013

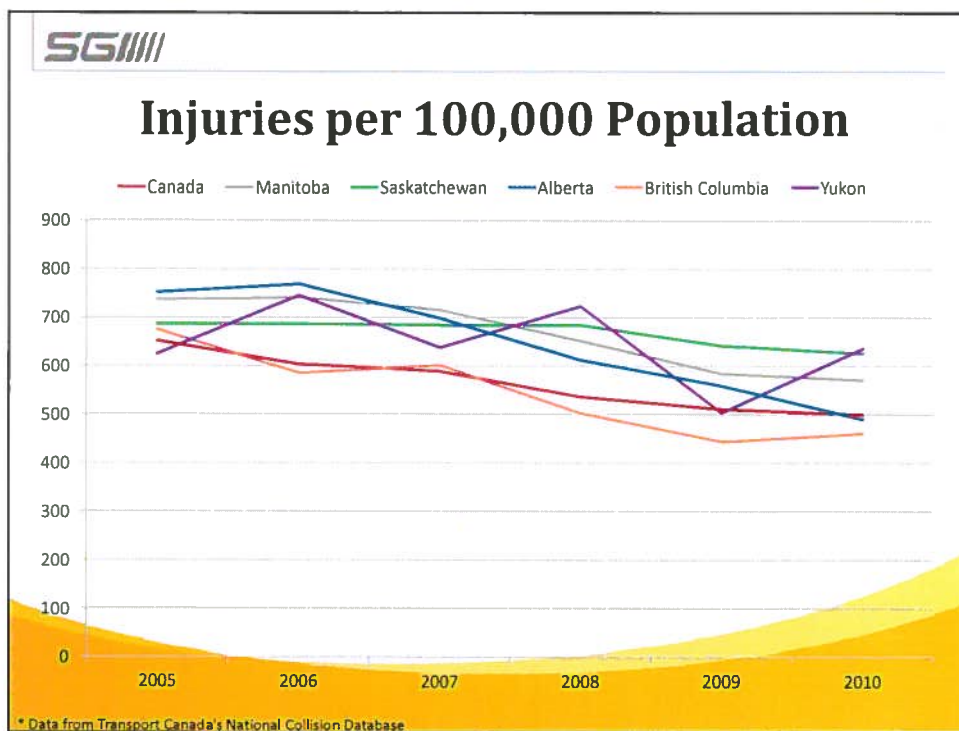


Fatalities per 100,000 Population

Canada Manitoba Saskatchewan Alberta British Columbia



* Data from Transport Canada's National Collision Database

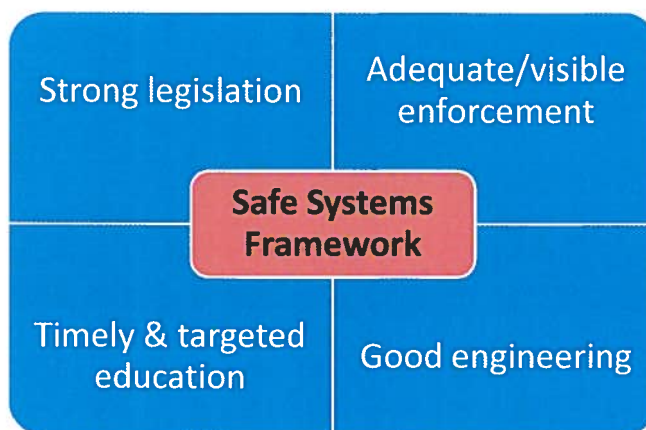


SGI

SGI's Presentation

1. Safe systems framework
2. Collision overview
3. Impaired driving
4. Distracted driving
5. Excessive speed
6. Intersection safety
7. Seatbelt use
8. Wildlife
9. Current initiatives
10. Possible solutions

Safe Systems Framework

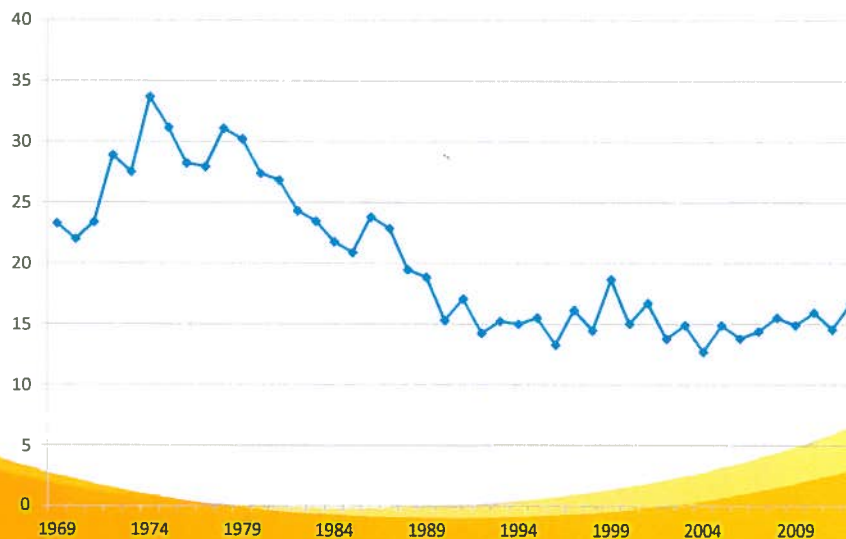


SG

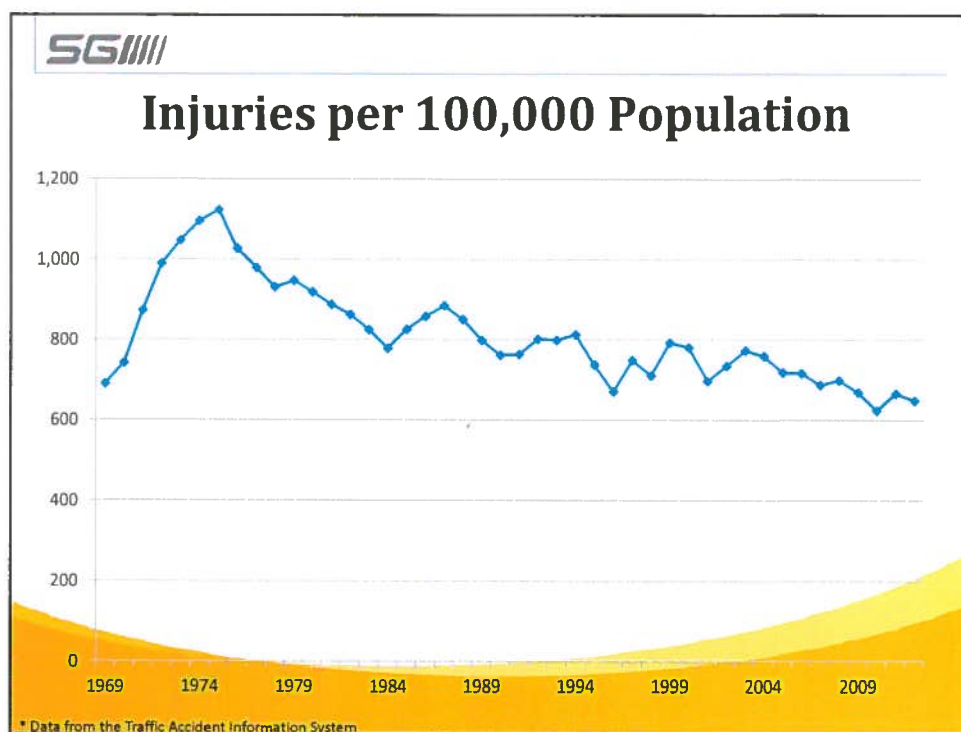
Collision Overview

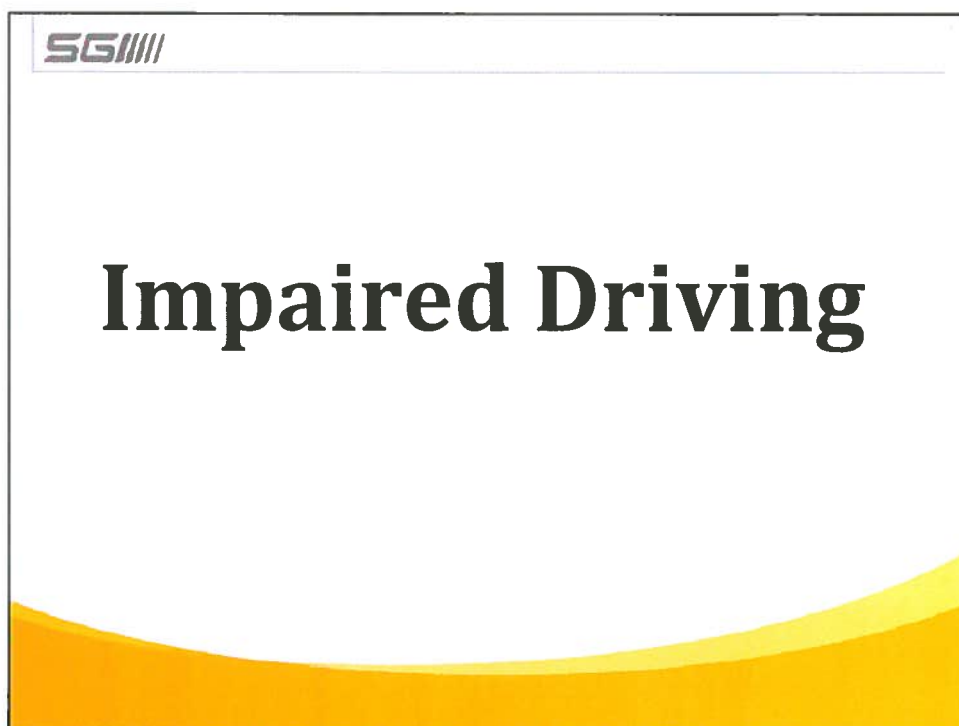
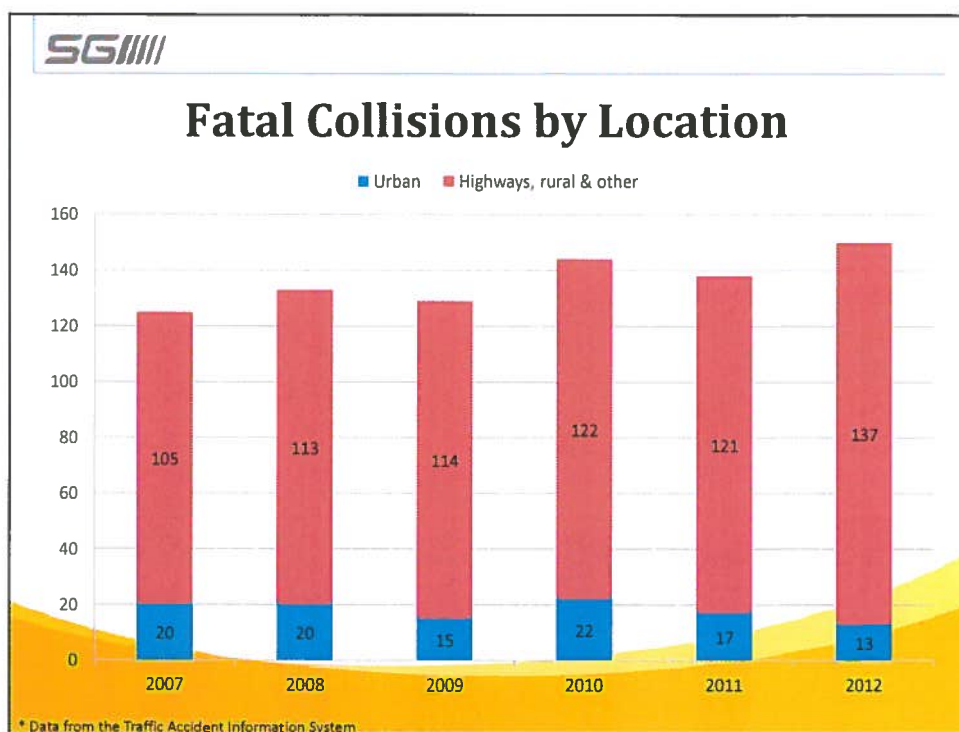
SG

Fatalities per 100,000 Population



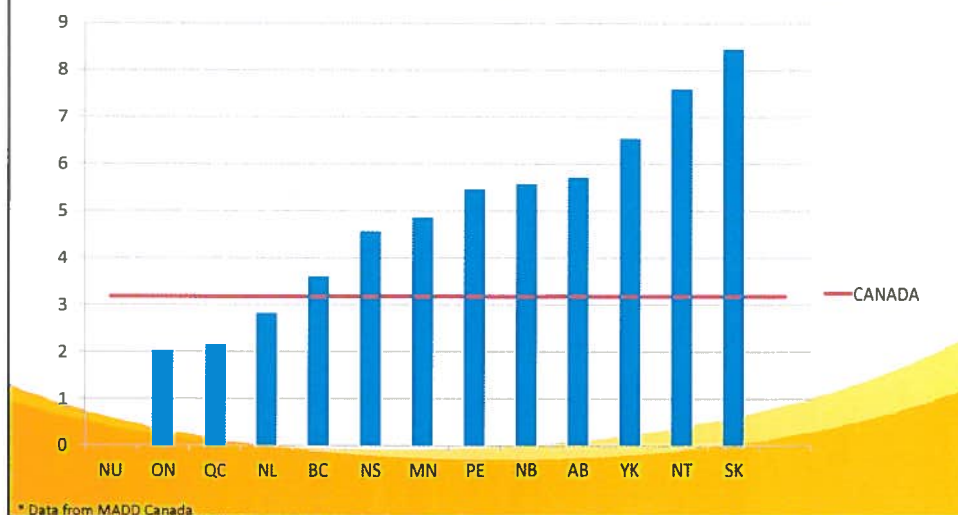
* Data from the Traffic Accident Information System







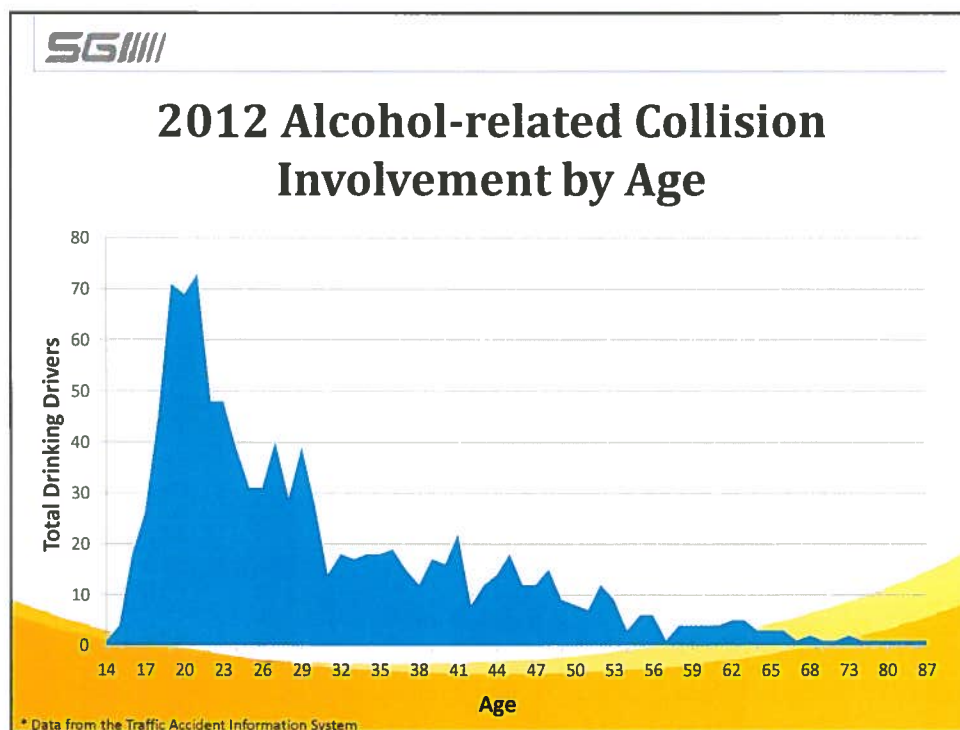
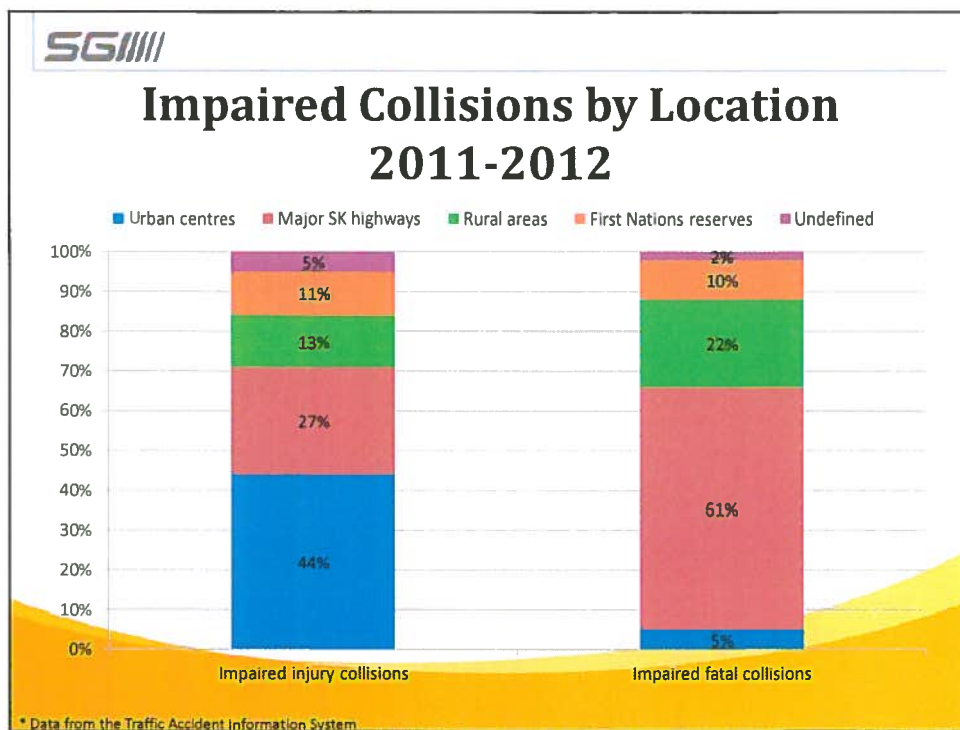
2009 Impairment-Related Traffic Fatalities Per 100,000

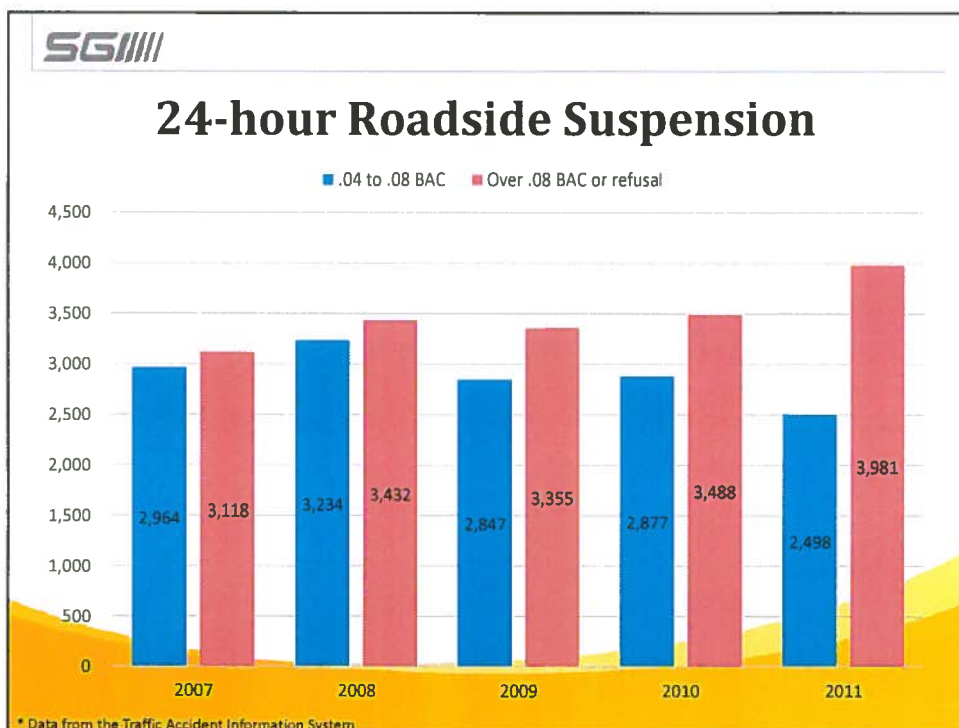
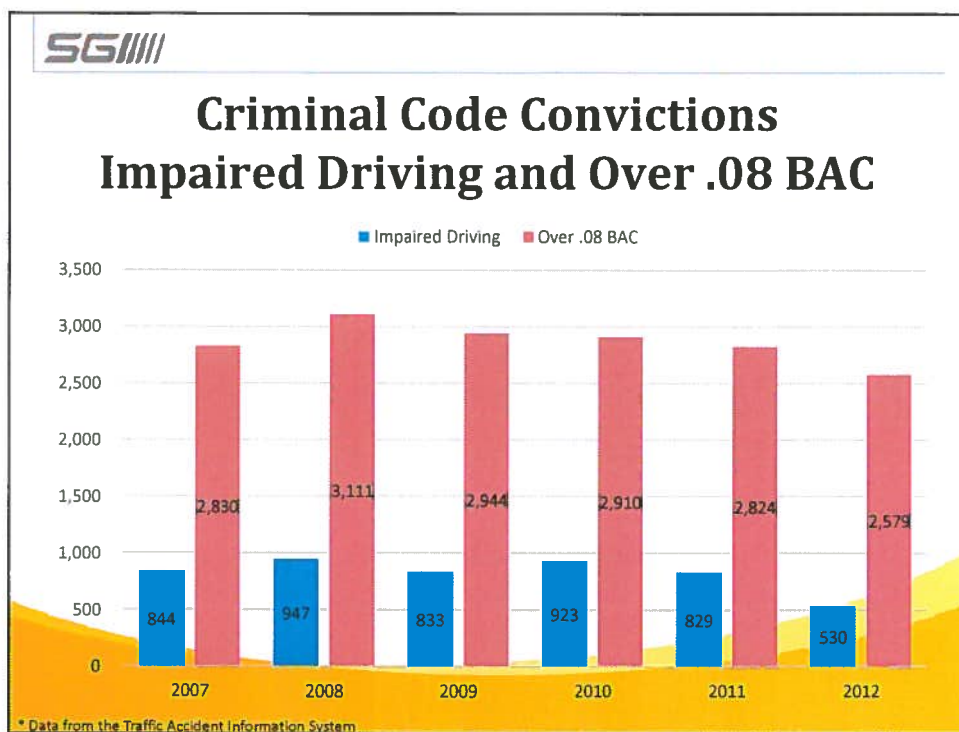


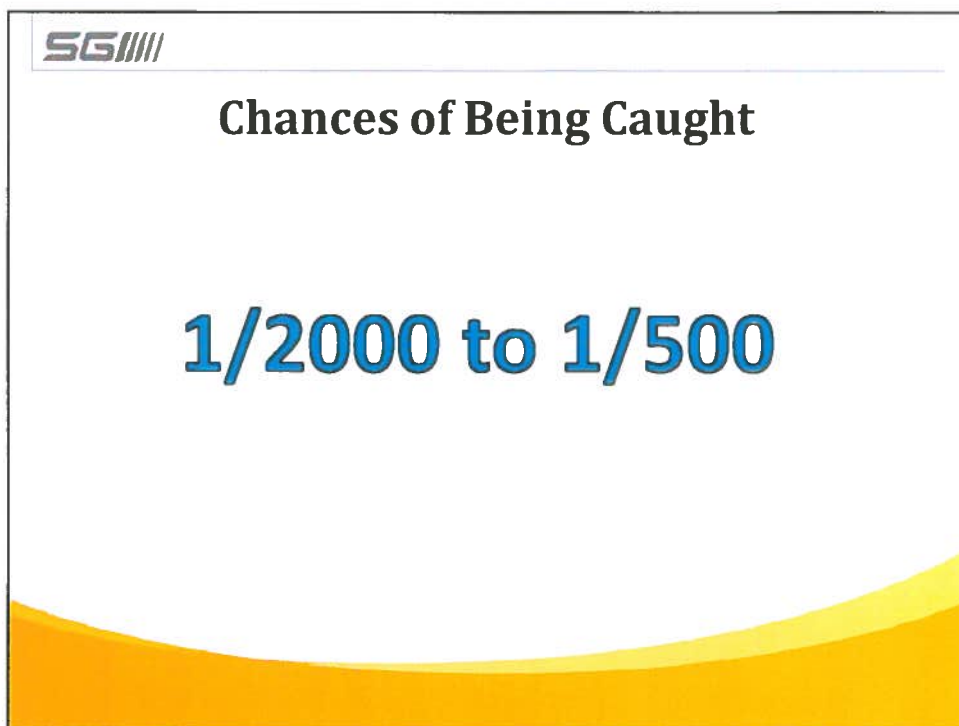
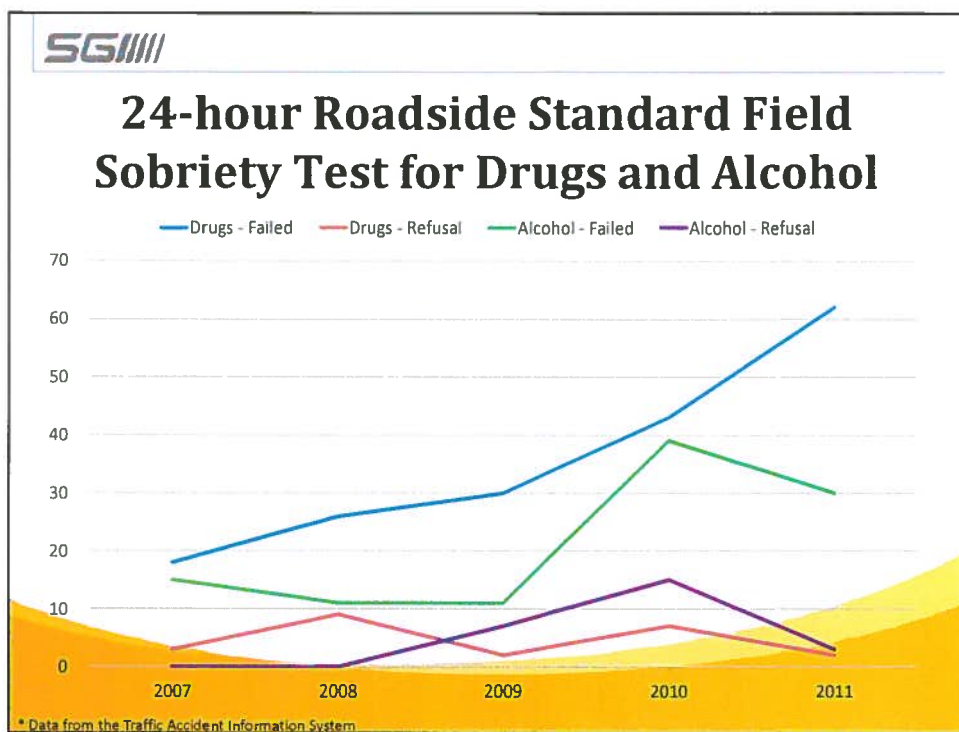
Alcohol-related Injury and Fatal Collisions

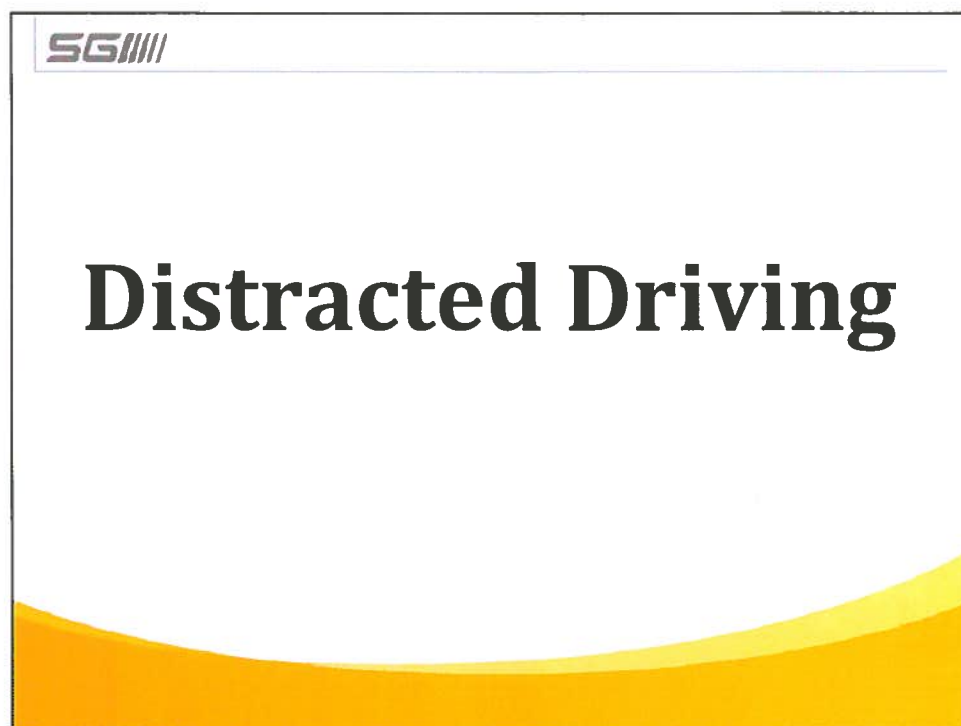
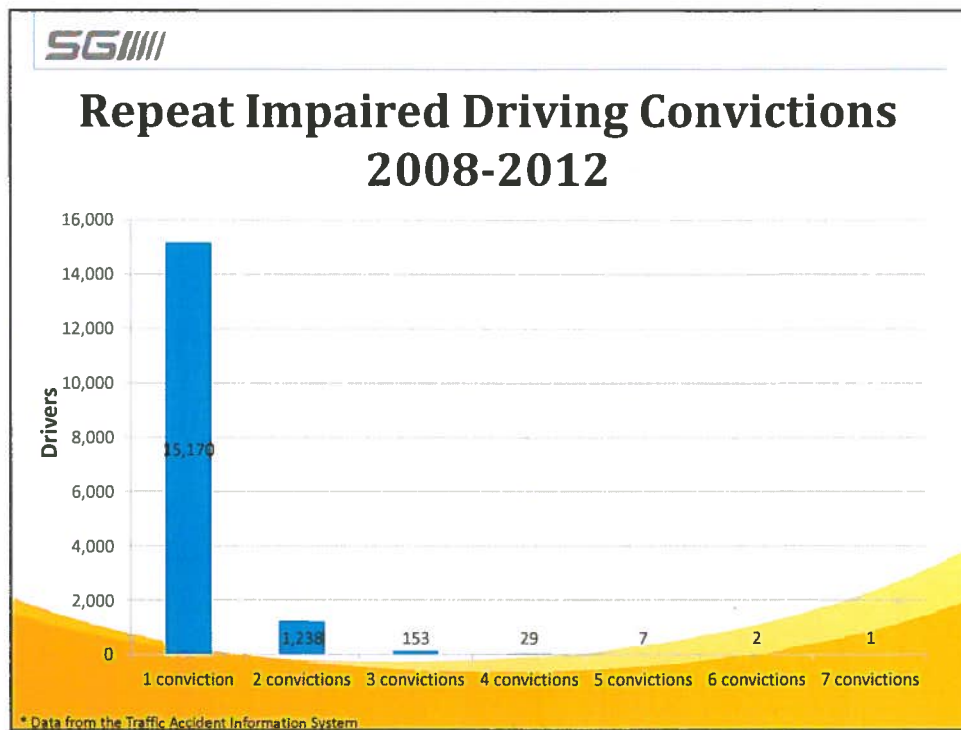
	Injury Collisions	Fatal Collisions	Total	Injuries	Fatalities
2011	381	50	431	634	59
2012	432	50	482	701	59
Total	813	100	913	1335	118

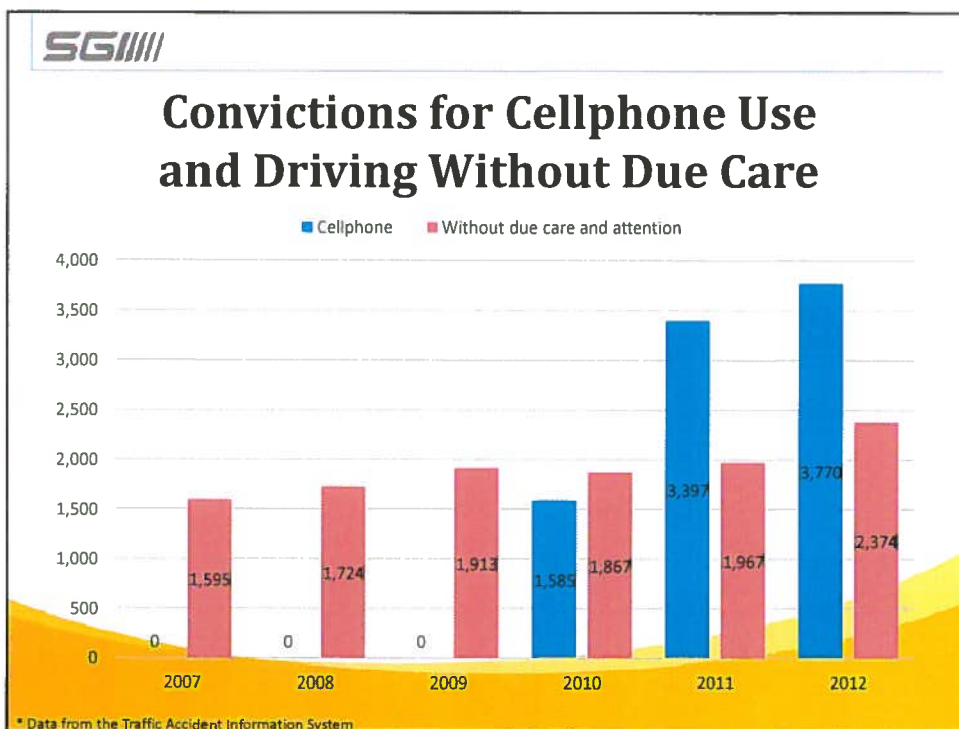
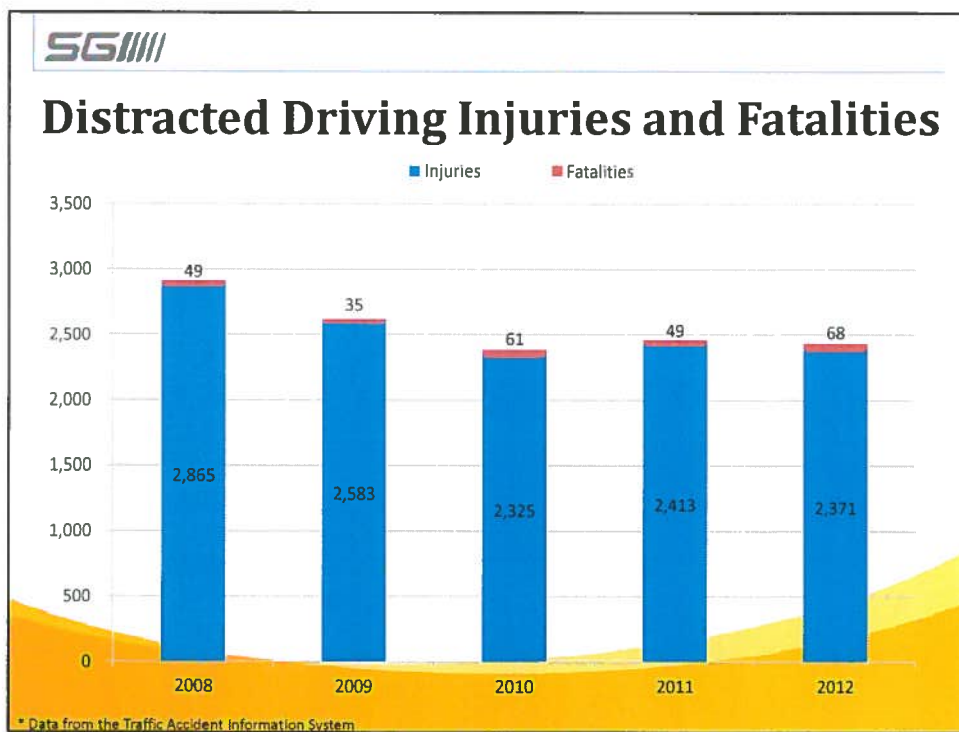
* Data from the Traffic Accident Information System

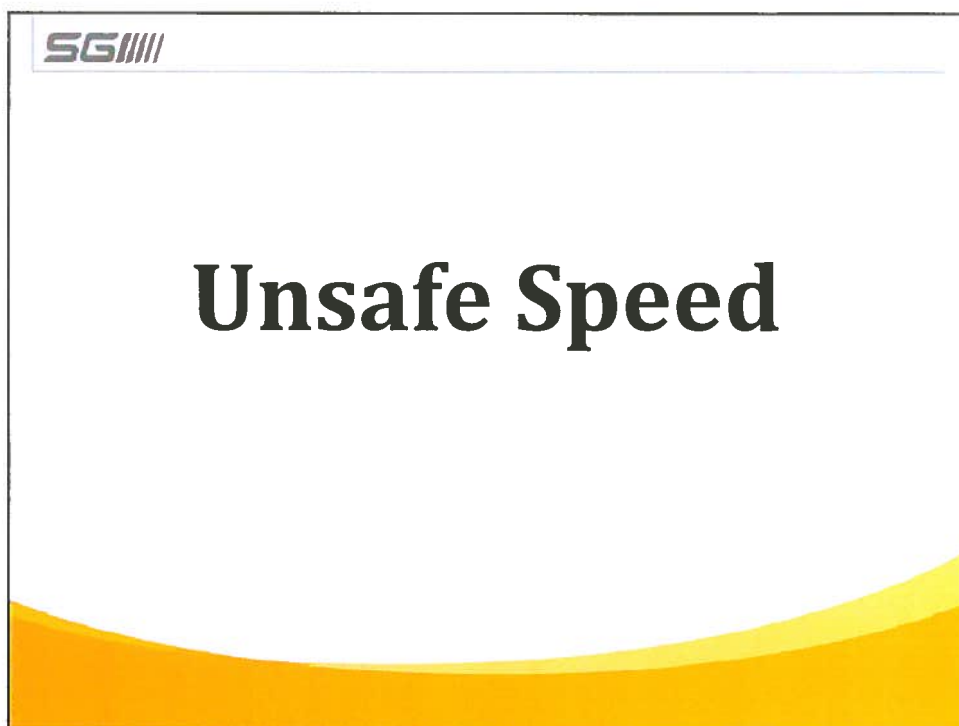
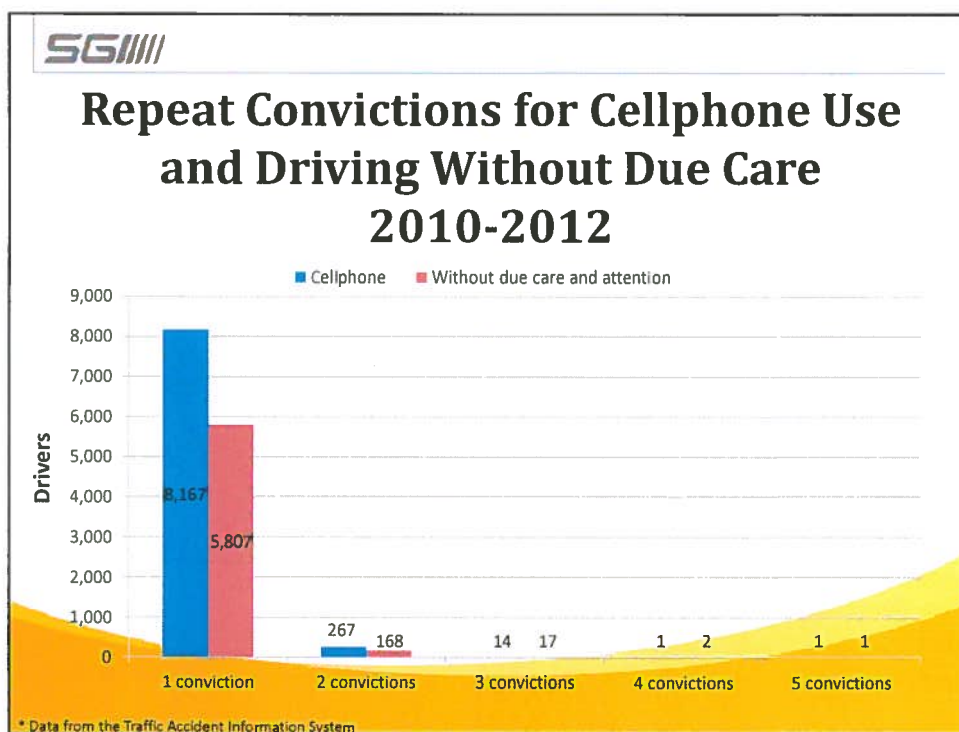


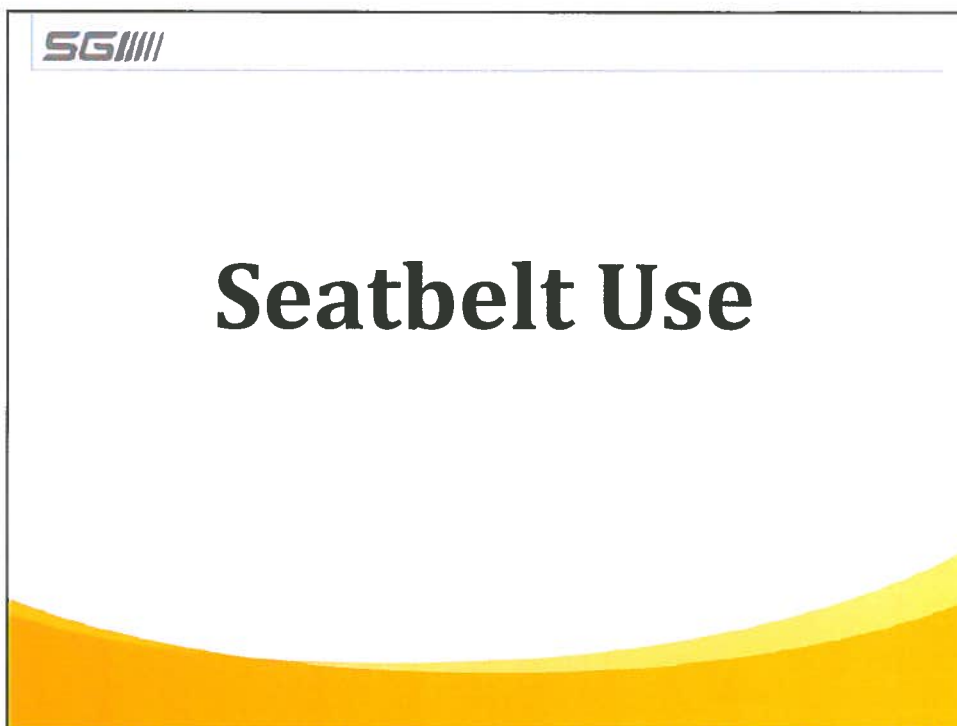
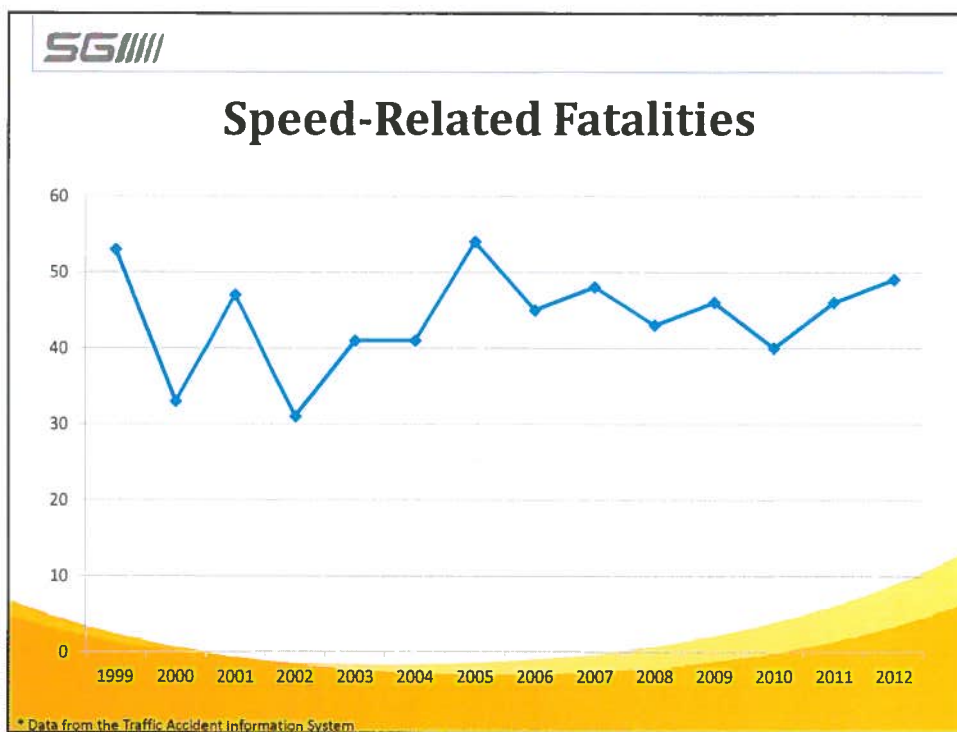


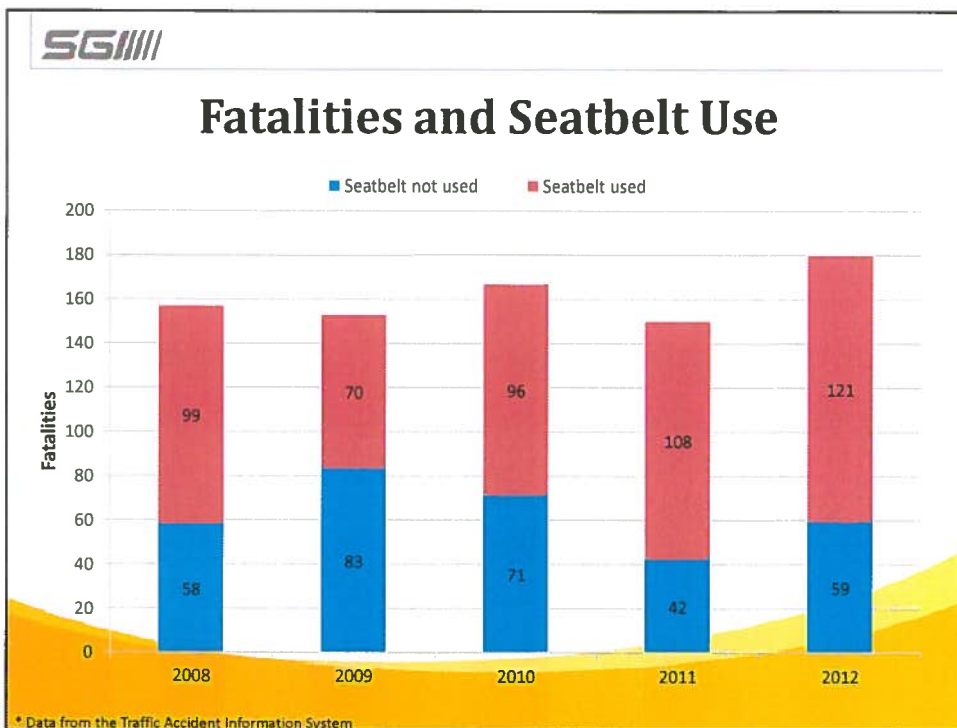
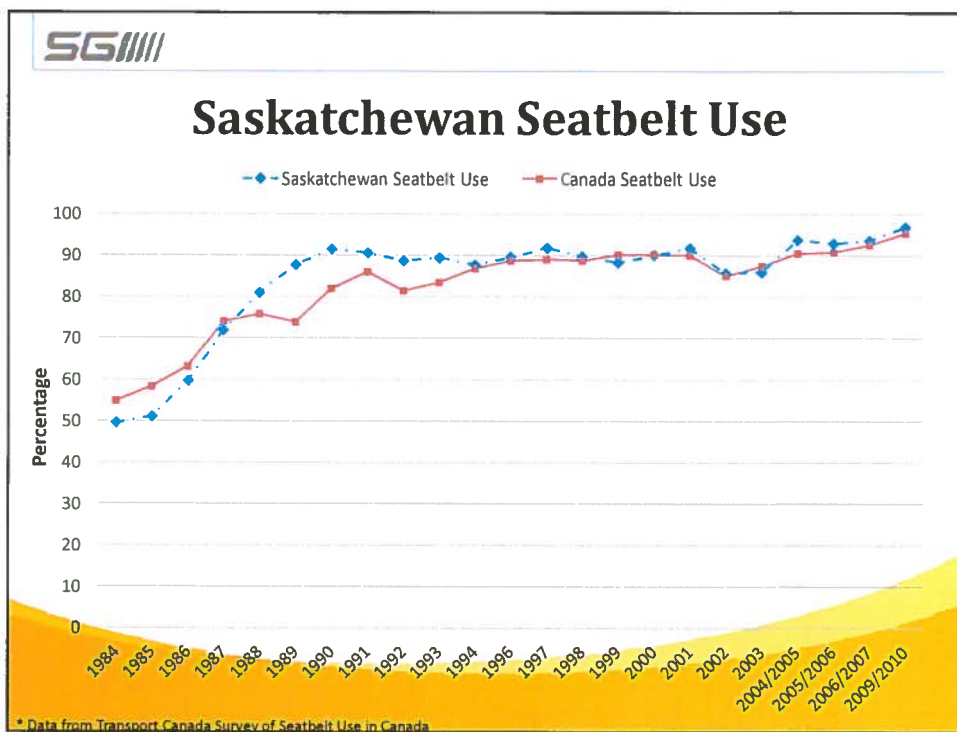










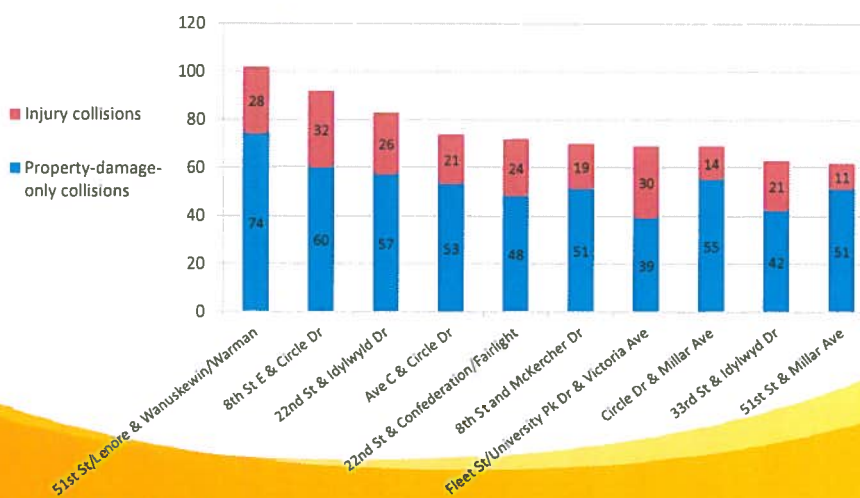




Intersections



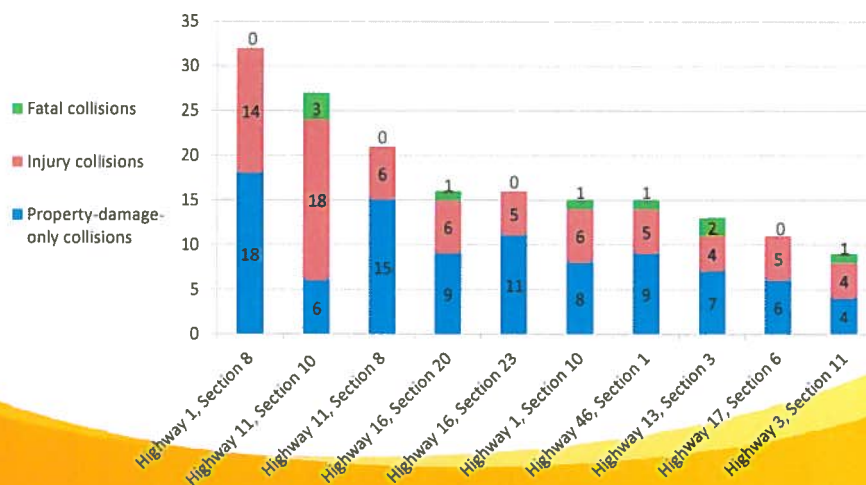
Urban Intersections with the Most Collisions 2011-2012



* Data from the Traffic Accident Information System



Highway Intersections with the Most Collisions 2011-2012



* Data from the Traffic Accident Information System



Wildlife



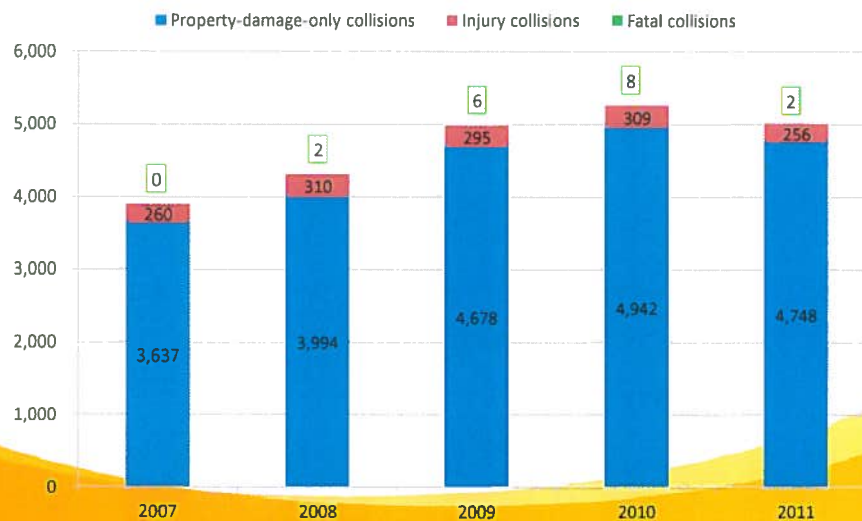
Wildlife Claims

Year	Number of Claims	Claim Costs	Claims/100,000 Residents
2004	11,631	\$29.2 million	1,169
2007	13,225	\$37.8 million	1,327
2009	14,067	\$45.5 million	1,367
2010	13,733	\$47.9 million	1,308
2011	13,148	\$47.6 million	1,236
2012	13,658	\$51.6 million	1,257

* Data from the SGI Claims division



Wildlife Collisions by Severity



* Data from the Traffic Accident Information System



Current Initiatives



Strong Legislation

- Addiction screening
- Driver's licence suspensions
- Low blood alcohol concentrations
- Zero alcohol tolerance for new drivers
- Ignition Interlock
- Safe Driver Recognition
- Graduated Driver Licensing
- Handheld cellphone ban
- Motorcycle Graduated Driver Licensing



Adequate/Visible Enforcement

- Enforcement Overdrive
- Report Impaired Drivers (RID)
- Automated Licence Plate Readers
- Aerial speed enforcement in Saskatoon



Timely and Targeted Education

- Education and awareness campaigns
- Speed reader boards
- Students Against Drinking and Driving
- SGI Safe Ride app
- Seatbelt challenges
- Child restraint clinics



Good Engineering

- Sanding truck/snowplow in Regina
- Road infrastructure improvements
- Deer fencing



Possible Solutions



Dedicated Rural Traffic Enforcement

	SK 2010	Alberta 2010	BC 2010
Traffic enforcement	63 (48 on-road)	178 RCMP 107 sheriffs	170 RCMP
Injuries per 100,000 population	625.9	490.5	461.5
Fatalities per 100,000 population	16	9.2	8



Dedicated Rural Traffic Enforcement

Phase	Positions Added	Program Costs
1	20 (20)	\$ 3.52 million
2	33 (53)	\$ 7.48 million
3	33 (86)	\$11.44 million
4	34 (120)	\$15.60 million





Tougher Drinking and Driving Counter-measures

- Expand zero tolerance to 21 years and under.
- Increase roadside suspensions for new drivers who fail a drug test.
- Make addiction screening user pay.
- Introduce mandatory vehicle impoundments and increase roadside suspensions.
- Introduce mandatory ignition interlock.
- Increase Safe Driver Recognition program penalties for repeat offenders.



Tougher Drinking and Driving Counter-measures

Low-BAC (.04 to .08) offence changes:

	Current	Proposed
Zero tolerance for alcohol	New drivers – in the Graduated Driver Licensing (GDL) program • Min. 30-day roadside suspension	Drivers 21 years of age and under and all GDL drivers • Min. 30-day roadside suspension
Vehicle impoundment	n/a	2 nd & subsequent offences: 7 days
Ignition interlock	n/a	3 rd & subsequent: 1 year
Drug-impaired driving	Immediate 24-hr roadside suspension	1 st and subsequent: Immediate 30-day roadside suspension for GDL
Safe Driver Recognition program	2 nd offence: -4 points 3 rd & subsequent: -4 points	2 nd offence: Move to -12 in penalty zone (equivalent to \$300); deduct additional 12 points if already in penalty zone 3 rd & subsequent: Move to -18 in penalty zone (equivalent to \$450); deduct additional 18 points if already in penalty zone
Addiction screening	Funded by SGI	User pay



Tougher Drinking and Driving Counter-measures

High-BAC (over .08), impaired driving or refusal to provide a breath sample offence changes:

	Current	Proposed
Roadside suspension	Immediate 24-hour suspension; extended to 90 days after SGI notified	.08 to .15 or impaired driving: immediate 90-day suspension .16 & over or refusal: immediate 120-day suspension
Vehicle impoundment	n/a	.08 to .15 or impaired: 30 days .16 & over or refusal: 60 days
Ignition interlock	Voluntary	2 nd offence: 1 year 3 rd offence: 3 years 4 th & subsequent: 5 years
Safe Driver Recognition program	\$500	.08 to .15 or impaired: \$1,000 .16 & over or refusal: \$2,000
Addiction screening	Funded by SGI	User pay
Roadside suspension	Immediate 24-hour suspension; extended to 90 days after SGI is notified	.08 to .15 or impaired driving: immediate 90-day suspension .16 & over or refusal: immediate 120-day suspension



Photo Radar Pilot

- SGI's goal: zero tickets & zero collisions
- Calm traffic
- Public awareness & visible signage



Photo Radar Pilot

- Circle Drive in Saskatoon
- Ring Road in Regina
- Highway 1 corridor at Moose Jaw
- School zones



Usage-based Insurance

- Insurance rates reflective of driving behaviour
- Improve driving behaviour
- New drivers, new motorcycle drivers, high-risk drivers, taxis
- Potential for voluntary, all driver incentive-based program – premium discounts for safe driving behaviour



Wildlife Management

- Reduce number of wildlife at high-risk locations
- Challenging due to geographical spread
- Engineering solutions at high-risk locations
- Signage?



Solution Impact

- Severity
- Certainty
- Swiftness



Solution Impact

	Impaired driving	Distracted driving	Excessive speed	Seatbelt use	Intersection safety	Wildlife collisions
Stronger drinking and driving counter-measures						
Dedicated rural traffic enforcement						
Photo radar						
Usage-based insurance						
Wildlife management						



Status quo isn't a solution.