

Impaired Driving (BAC>0.08) in Saskatchewan 2011-2012

The data in this report was developed from the Traffic Accident Information System (TAIS), which is police reported in the period 2011-2012. The 2012 TAIS data is still preliminary.

General Summary

Table 1 shows the number of injury and fatal crashes resulting from impaired drivers in 2011 and 2012, as well as the number of injuries and fatalities. Crashes that resulted in death increased by 5% in 2012 over the previous year, while crashes involving only injuries increased by 14%.

Table 1: All Impaired Driving Injury and Fatal Collisions

	Injury Collisions	Fatal Collisions	Total	Number of Injuries	Number of Fatalities
2011	371	44	415	634	53
2012	422	46	468	701	55
Total	793	90	883	1335	108

Table 2 shows the number of Saskatchewan drivers involved in impaired driving crashes. About 95% of the drivers involved in these collisions are Saskatchewan residents.

Table 2: Saskatchewan Drivers involved in Impaired Driving Injury and Fatal Collisions

	Injury Collisions	Fatal Collisions	Total	Number of Injuries	Number of Fatalities
2011	345	42	387	596	51
2012	406	43	449	675	50
Total	751	85	836	1271	101
Proportion that are SK Drivers	95%	94%	95%		

Prior Convictions

Table 3 shows the breakdown of prior Criminal Code convictions for impaired drivers involved in injury and fatal collisions in Saskatchewan. Between 39-43% of impaired drivers involved in injury crashes were repeat Criminal Code offenders (BAC >.08), while 20%-33% of those involved in fatal collisions were repeat offenders.

Table 3: Impaired Drivers with Prior Criminal Code Convictions (BAC > .08) Involved in Injury and Fatal Collisions				
Count of Prior Criminal Code Convictions	2011		2012	
	Injury Collisions	Fatal Collisions	Injury Collisions	Fatal Collisions
No Prior	210	35	259	31
1 Prior	109	7	125	10
2 Prior	34	1	27	3
3 Prior	8	1	6	1
4 Prior	4	0	5	1
5 Prior	4	0	0	0
6 Prior	2	0	0	0
Total	371	44	422	46
Total with Priors	161	9	163	15
Proportion with Priors	43%	20%	39%	33%

Geographic Location

Tables 4 and 5 show the distribution of impaired driving injury and fatal collisions by location. On average, 61% of the fatal collisions involving impaired drivers occurred on major highways¹ in the province, 22% occurred in rural areas, 15% within First Nation reserves and 4% in urban centres.

On the other hand, the majority (44%) of crashes resulting in only injuries occurred in urban centres, while 27% occurred on major Saskatchewan highways. About 13% of crashes involving only injuries occurred in rural areas, while 11% occurred on the First Nations roads.

Table 4: Number of Impaired Collisions by Location		
Number of Impaired Collisions on Major Saskatchewan Highways		
	Injury Collisions	Fatal Collisions
2011	111	27
2012	104	28
Total	215	55
Number of Impaired Collisions in Urban Centers		
	Injury Collisions	Fatal Collisions
2011	162	2
2012	184	2
Total	346	4

¹ Major highway includes any provincial highway maintained by the Ministry of Highways and Infrastructure, as well as public highways in northern areas with a highway number greater than 900.

Number of Impaired Collisions in the Rural Areas		
	Injury Collisions	Fatal Collisions
2011	47	10
2012	57	10
Total	104	20

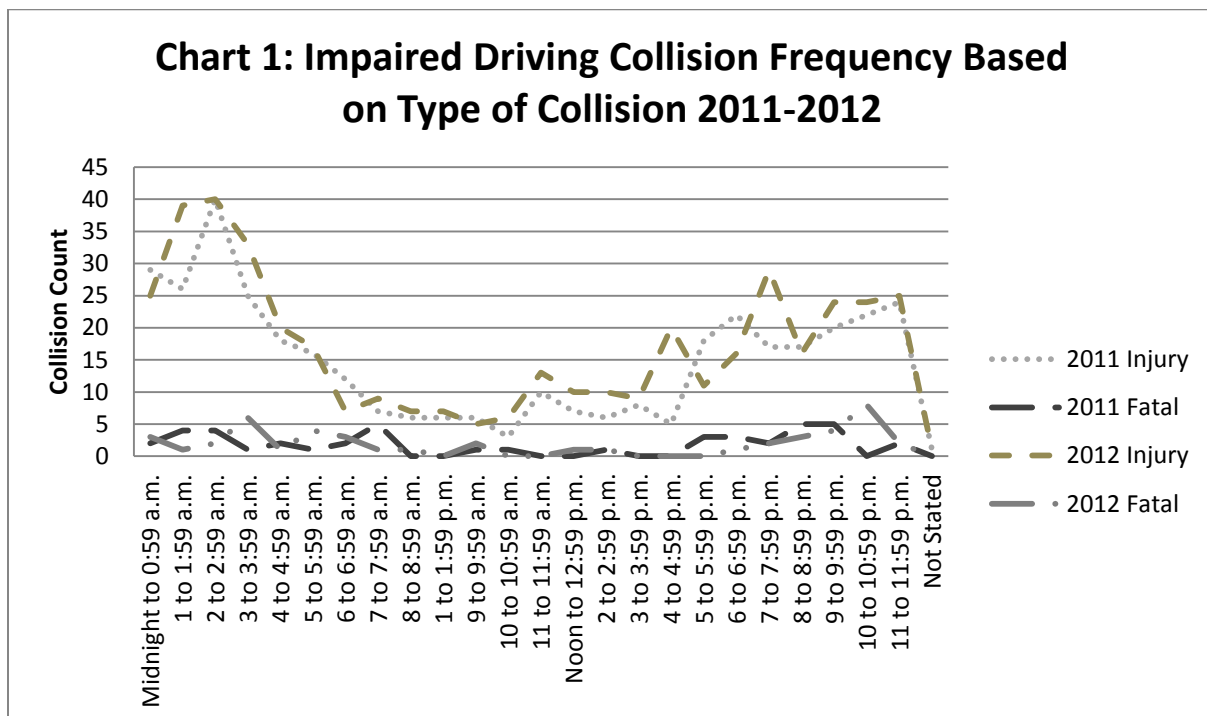
Number of Impaired Collisions on First Nations Reserves		
	Injury Collisions	Fatal Collisions
2011	33	3
2012	51	6
Total	84	9

Table 5: Impaired Driving Collision Proportions by Location				
	2011		2012	
	Injury Collisions	Fatal Collisions	Injury Collisions	Fatal Collisions
Highway	30%	61%	25%	61%
Urban	44%	5%	44%	4%
Rural	13%	23%	14%	22%
First Nations	9%	7%	12%	13%
Unidentified	4%	4%	5%	0%

The maps provided in the appendices 1-4 show the physical location of the highway and urban collisions, which when combined, represent the highest fatality incidences.

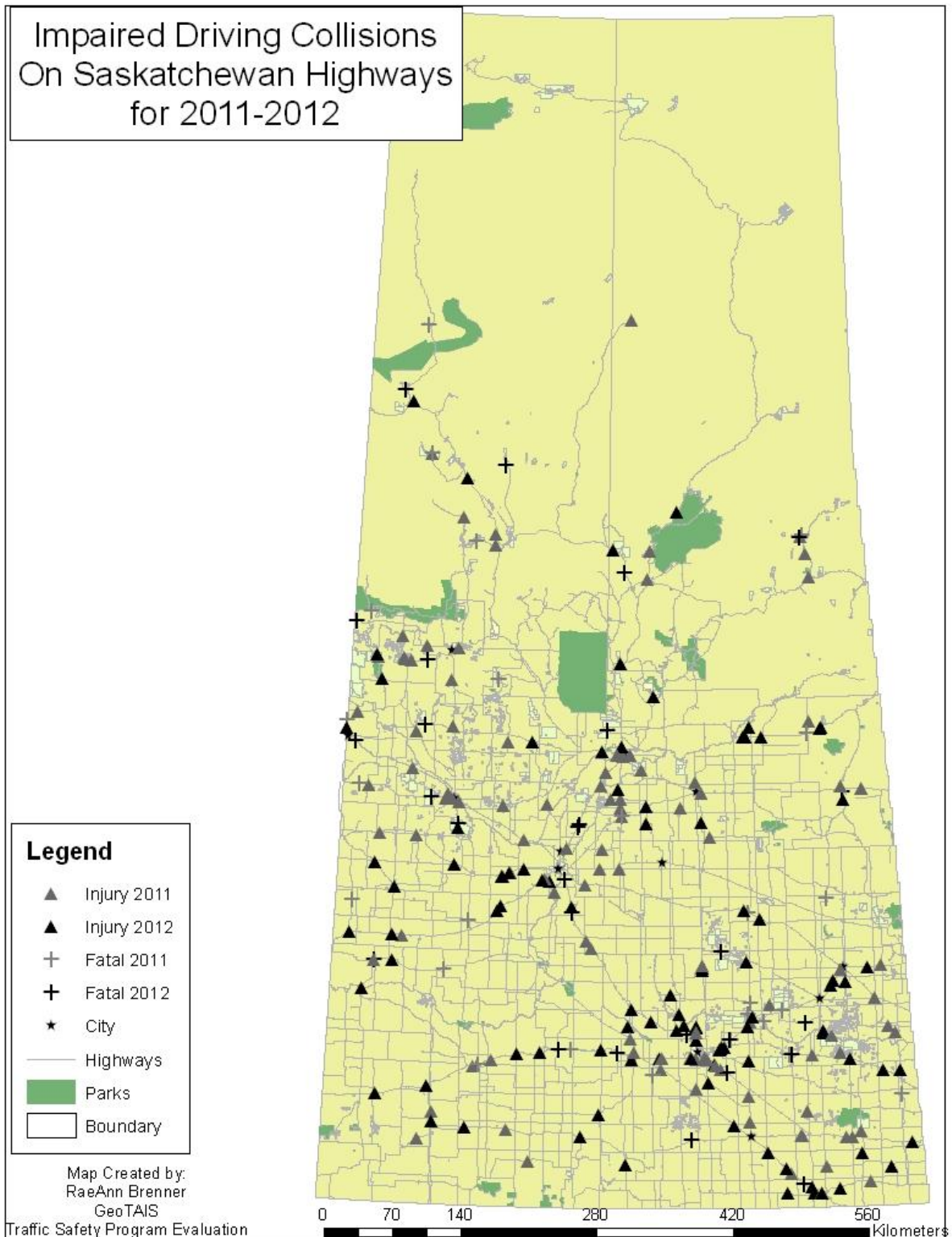
Time of Day

Impaired injury crashes begin to increase from 3 p.m. peaking between 12 midnight and 4:00 a.m. Fatal crashes follow a similar pattern. Chart 1 shows the time distribution for injury and fatal collisions.



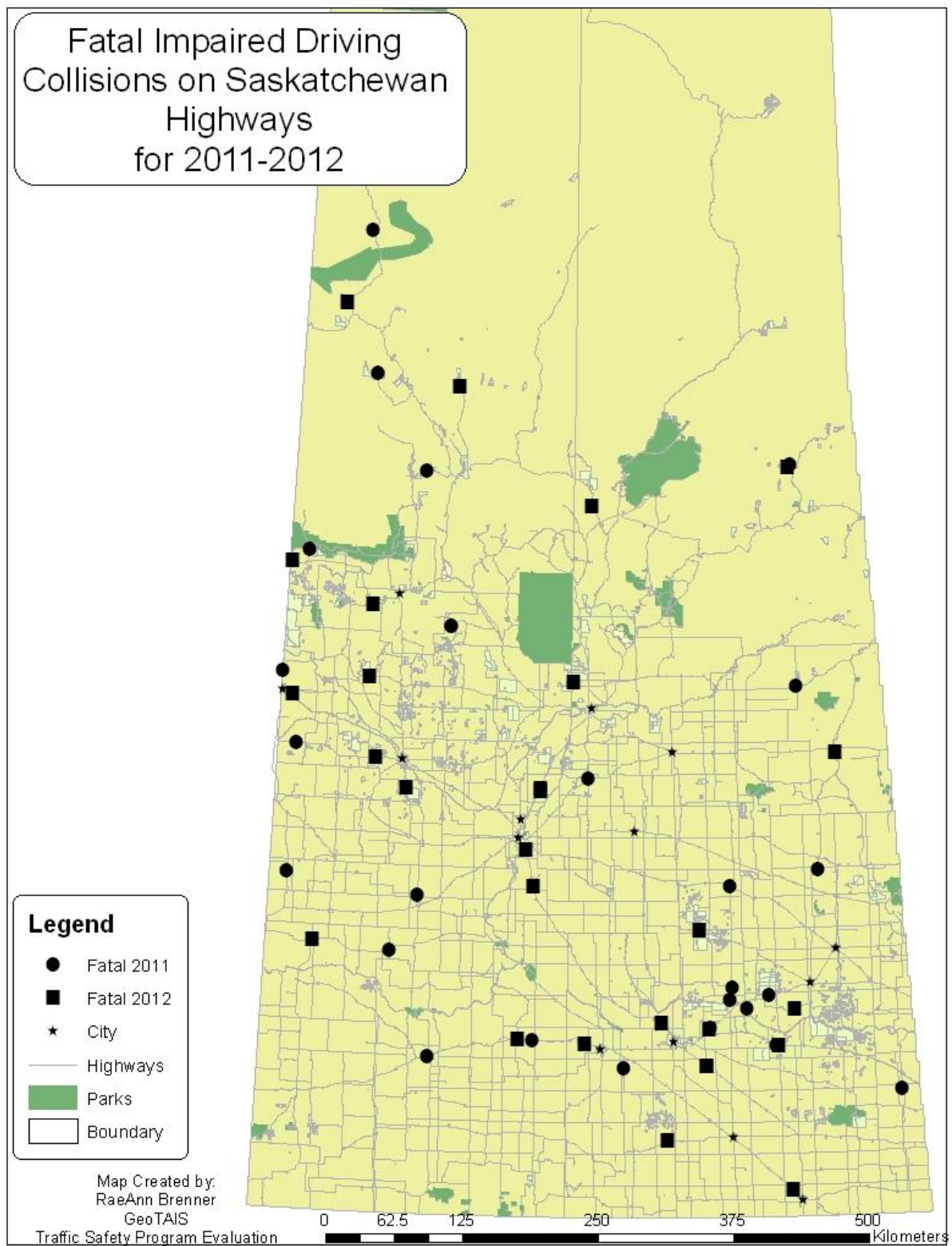
Appendix 1

The following map shows the geographic location of all highway impaired-related collisions. There are three notable clusters that can be seen on the map. The first is around the Lloydminster area, the second is around central Saskatchewan and the third is around southeast Saskatchewan.



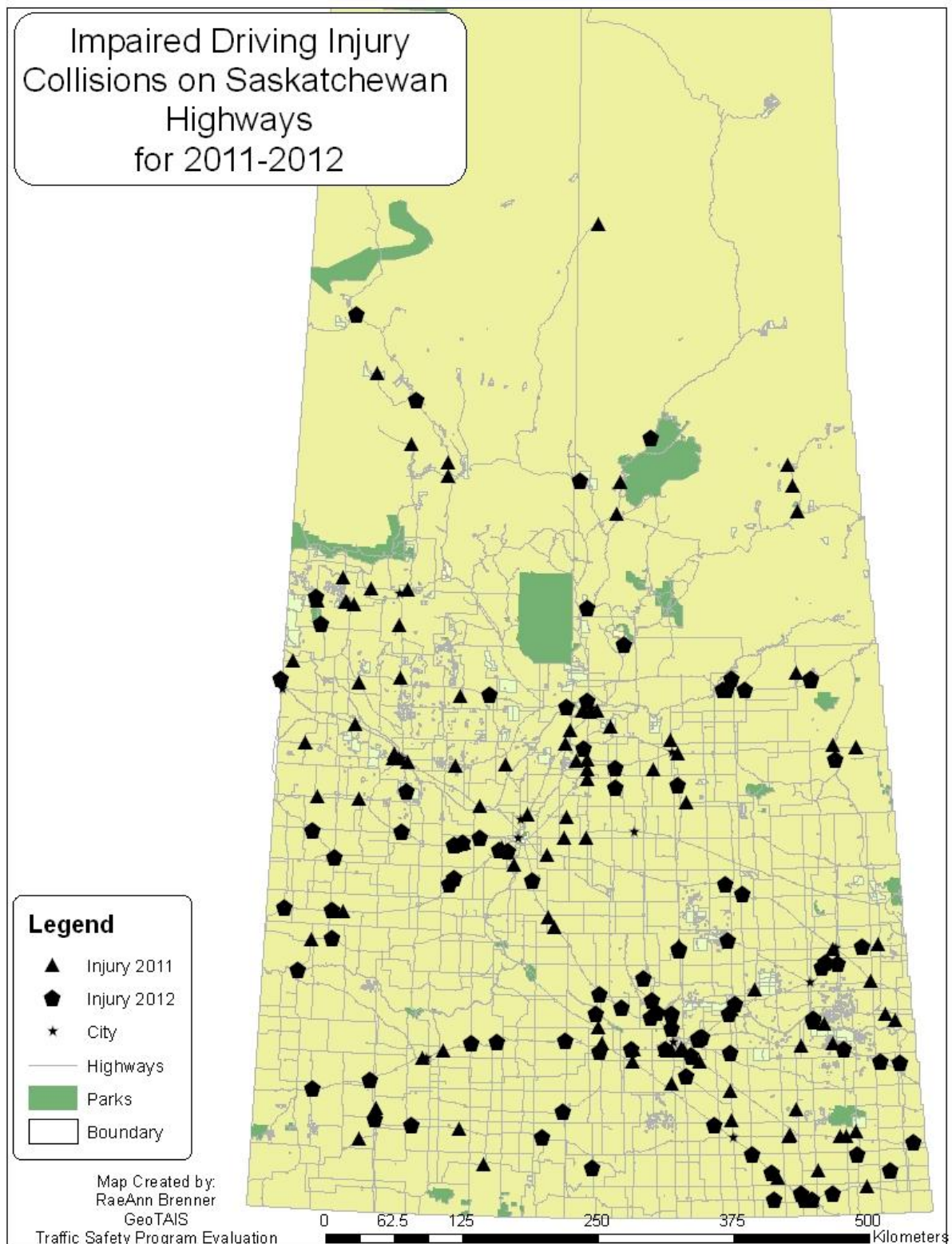
Appendix 2

The following map shows only the fatal impaired collisions, indicating a pattern down Highway 1.



Appendix 3

The following map shows the location of the injury-only impaired collisions.



Appendix 4

This map shows the urban centres that had impaired driving injury collisions in 2011 and 2012. The text within the map indicates how many injury collisions occurred in each of the 15 urban centres – 160 occurred in Regina, 124 in Saskatoon and 44 in Prince Albert.

